

WILKERSON®

Richland, Michigan 49083

FRL-SIF-603

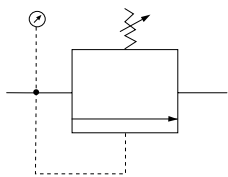
X11 Diaphragm Relief Valve

ISSUED: April, 2005

Supersedes: December, 2004

Diaphragm Relief Valve X11

 = "Most Popular"



X11-02-000

Diaphragm Relief Valve

Relieving pressure is adjustable with 1/4" NPT inlet / outlet ports and two 1/8" gauge ports. It can be used where pressure relief is desired to protect circuits and components and provide close, but not precise control, and can also be used for venting applications.

Specifications

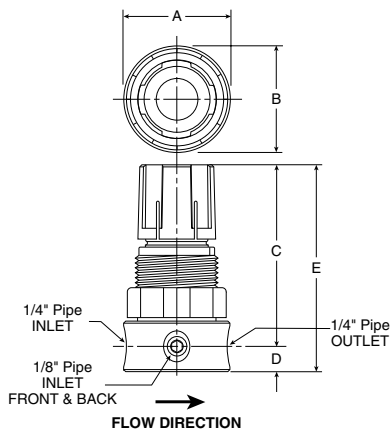
Operating Temperature	40° to 120°F (4° to 49°C)	
Maximum Supply Pressure	300 PSIG (20.7 bar)	
Adjusting Range Pressure	0 to 50 PSIG (0 to 3.4 bar) 0 to 100 PSIG (0 to 6.8 bar)	
Port Size		
Inlet	NPT	1/4
Outlet	NPT	1/4
Weight	lb. (kg)	0.5 (0.23)

Materials of Construction

Adjusting Knob	Polypropylene
Adjusting Screw	Zinc-plated Steel
Body	Brass
Diaphragm / Disc	Buna-N
Nut	Chromated Steel
Bonnet	Acetal
Spring	Zinc-plated Steel

Accessories

Nut, Panel Mount (Plastic)	R05X51
Mounting Bracket	SA161X57



NOTE: 1.25" Dia. (32 mm) hole required for panel nut mounting

⚠ WARNING

**Product rupture can cause serious injury.
Do not connect regulator to bottled gas.
Do not exceed maximum primary pressure rating.**

Dimensions

Models	Inches (mm)	A	B	C	D	E
Standard Unit (100 PSI) X11-02-000		1.62 (41)	1.62 (41)	2.66 (67)	0.375 (9.5)	3.00 (76)
Low Pressure Unit (50 PSI) X11-02-L00		1.62 (41)	1.62 (41)	2.66 (67)	0.375 (9.5)	3.00 (76)