

MSD Series

Modular Membrane Air Dryers

Catalog 9CW-DX-233-1



WILKERSON®

 **WARNING**

FAILURE OR IMPROPER SELECTION OR IMPROPER USE OF THE PRODUCTS AND/OR SYSTEMS DESCRIBED HEREIN OR RELATED ITEMS CAN CAUSE DEATH, PERSONAL INJURY AND PROPERTY DAMAGE.

This document and other information from The Company, its subsidiaries and authorized distributors provide product and/or system options for further investigation by users having technical expertise. It is important that you analyze all aspects of your application including consequences of any failure, and review the information concerning the product or system in the current product catalog. Due to the variety of operating conditions and applications for these products or systems, the user, through its own analysis and testing, is solely responsible for making the final selection of the products and systems and assuring that all performance, safety and warning requirements of the application are met.

The products described herein, including without limitation, product features, specifications, designs, availability and pricing, are subject to change by The Company and its subsidiaries at any time without notice.

Offer of Sale

The items described in this document are hereby offered for sale by The Company, its subsidiaries or its authorized distributors. This offer and its acceptance are governed by the provisions stated on the separate page of this document entitled "Offer of Sale".

© Copyright 2005, Parker Hannifin Corporation. All Rights Reserved.

WILKERSON®

Pneumatic Division
Richland, Michigan
www.wilkersoncorp.com

Compact Membrane Dryer Advantages 2

How The Wilkerson MSD Membrane Dryer Functions 3

Dimensional Drawings 4

Flow Charts 5-6

Specifications and Ordering Information 7

Dryer Selection 8

Offer of Sale 9

COMPACT MEMBRANE DRYER ADVANTAGES

The Wilkerson MSD Series membrane air dryers employ an advanced molecular membrane design that can provide atmospheric dewpoints as low as -40°F (-40°C). The MSD Series membrane dryer is available in 12 different models that can deliver compressed air at flow rates up to 21 SCFM with a -4°F (-20°C) atmospheric dewpoint. Wilkerson's membrane dryers are designed for easy installation, operation and long-term reliability.

Our compact, space saving membrane dryer design is compatible with our modular 18 and 28 Series coalescing filters, using our patented modular joiner set. A clean, dry air system is readily available by simply quick connecting our high efficiency coalescing filter to the membrane air dryer. Our innovative modular design eliminates the need for extra piping, adapters and fittings. The net result is an effective, quality, clean, dry air system that will provide low cost operation and minimal maintenance.

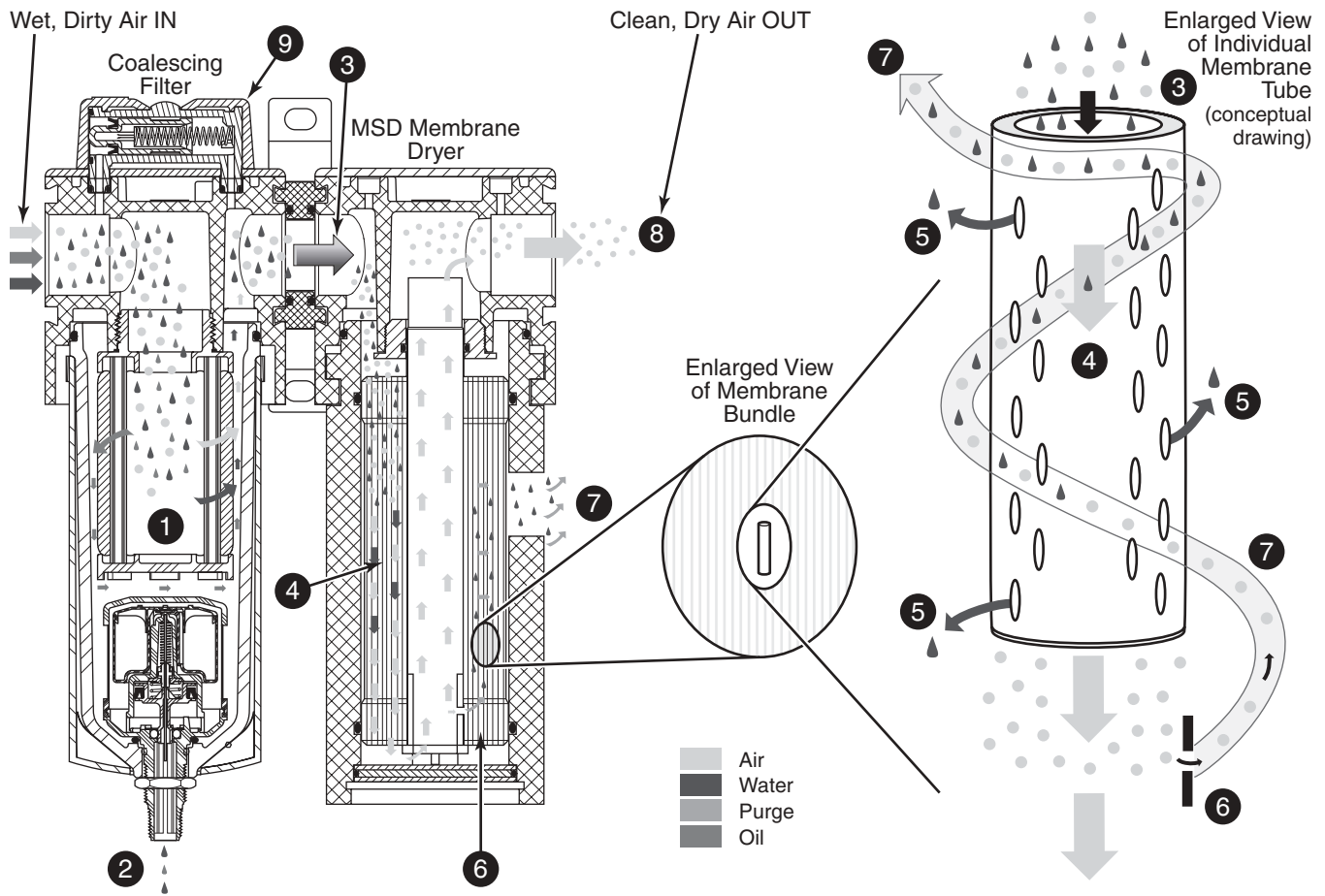
- Available in 3/8, 1/2 NPT or BSPP-G Port Sizes
- Dried Compressed Air is Immediate
- Compact Modular Design
- Simple and Space-Saving Installation
- Low Pressure Drop 



- No CFC's/FC's 
- Suitable For Hazardous Areas
- No Moving Parts
- No Electrical Connection Necessary 
- No User Purge Adjustment
- Compatible With 18/28 Series Modular Product Line

Wilkerson MSD Series

HOW THE WILKERSON MSD MEMBRANE DRYER FUNCTIONS



To achieve optimum performance and high quality compressed air for your application, it is imperative to install a Wilkerson coalescing filter with automatic drain. The coalescing filter prevents dirt particles and oil and water aerosols from contaminating the membrane. This drawing illustrates a typical clean, dry air system.

HOW IT WORKS

Dirty saturated air enters the Wilkerson coalescing filter (1) where solid particles, liquids and aerosol contaminants are efficiently trapped. The coalesced oil and water is then discharged through the float-type automatic drain. (2)

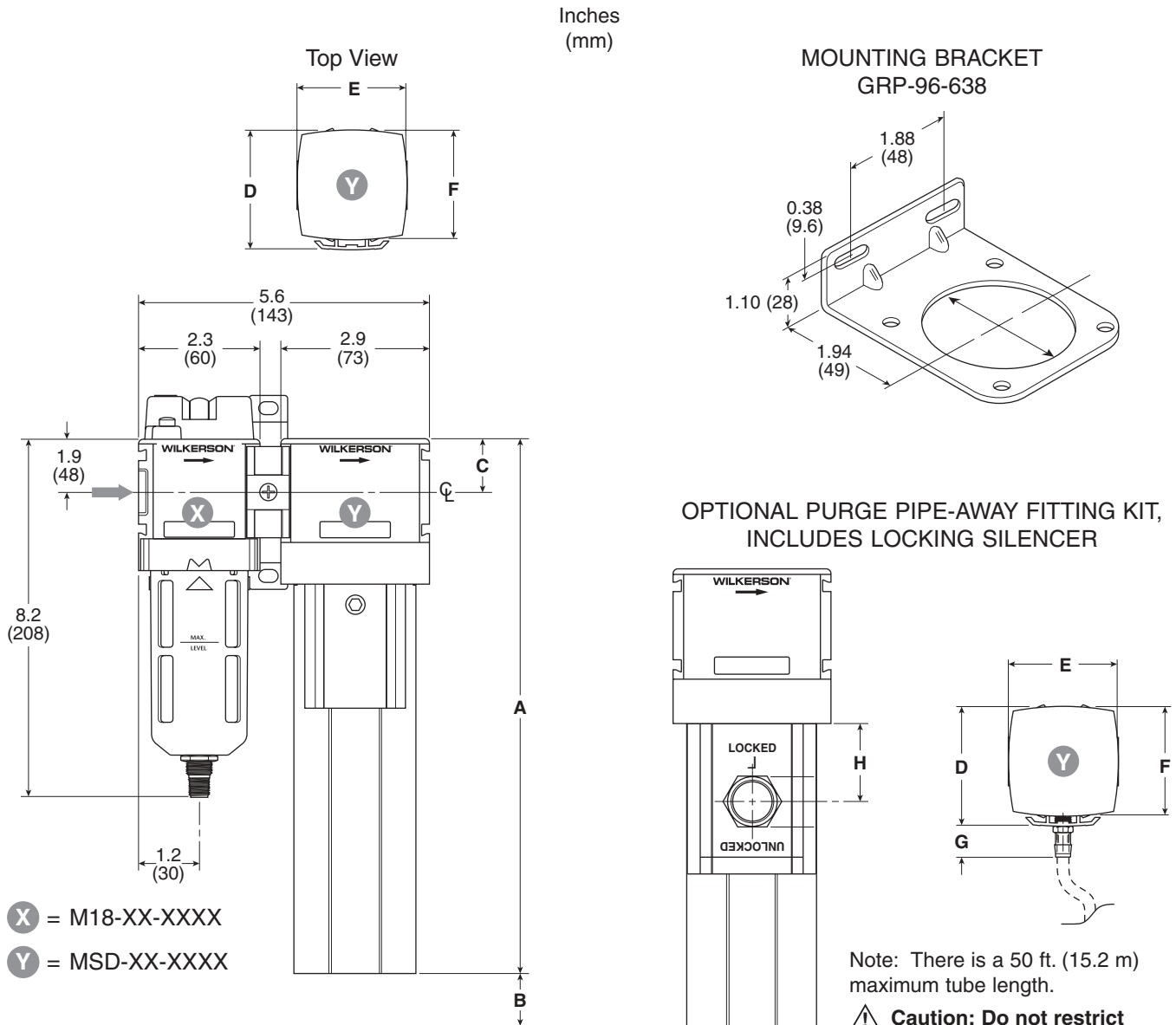
The clean, saturated compressed air now enters the dryer (3) and goes into the module (4) that consists of a densely packed bundle of hollow fiber membranes. As the compressed air flows through the membranes, the water vapor diffuses through the walls of the membrane. (5) A portion of the dried air from the outlet of the cartridge (6) diverted and expanded to atmospheric pressure for use as purge air. The purge air can be piped away using the optional exhaust pipe-away kit.

The counter flow purge air then sweeps over the outer surface of the hollow membrane fibers, removing the water molecules, where they are vented to atmosphere. (7) Clean, dry air is now supplied to the application. (8)

The principle of membrane dryer operation is very elementary. Saturated air has a higher partial vapor pressure than dry air. As a result, there is a constant migration of water molecules through the membrane (5) walls from inside the hollow fiber membrane, where you have wet compressed air, to outside, into the lower partial vapor pressure of the purge air stream.

The MSD membrane air dryer is designed to operate continuously — 24 hours per day, 7 days per week. The only maintenance required is changing the coalescing filter element when the standard pressure differential indicator (9) shows red. Due to our innovative quick disconnect bowl design, element change out is less than five minutes.

EXAMPLE: MEMBRANE DRYER, WITH M18 COALESCING FILTER



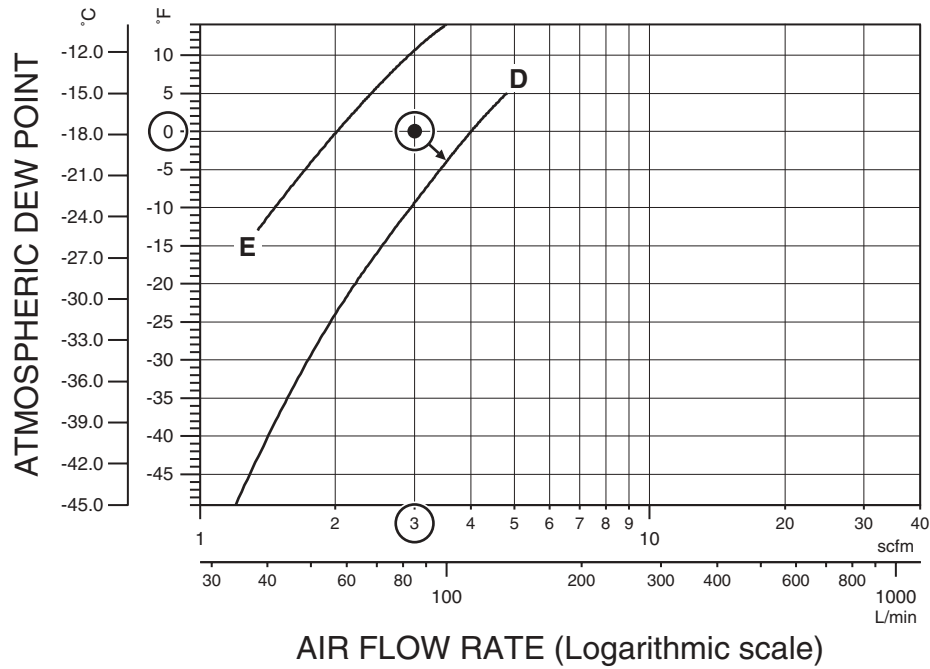
- X** = M18-XX-XXXX
- Y** = MSD-XX-XXXX

Note: For optimum system design and maximum element life, Wilkerson suggests using an F18 Series 5 micron particulate prefilter in front of the M18 Coalescer.

Dimensions								Inches (mm)
Model	A	B*	C	D	E	F	G	H
MSD-XX-KA1X	7.6 (193)	1.7 (42)	1.0 (26)	—	2.9 (74)	2.9 (74)	1.8 (46)	1.18 (30)
MSD-XX-KA2X	10.4 (264)	1.7 (42)	1.0 (26)	—	2.9 (74)	2.9 (74)	1.8 (46)	1.18 (30)
MSD-XX-KB1X	11.9 (302)	2.3 (57)	1.0 (26)	3.1 (79)	2.9 (74)	2.9 (74)	1.8 (46)	2.79 (71)
MSD-XX-KB2X	14.7 (373)	2.3 (57)	1.0 (26)	3.1 (79)	2.9 (74)	2.9 (74)	1.8 (46)	2.79 (71)

* Bowl removal clearance

DEWPOINT AT VARIOUS FLOW RATES



MSD-03-KA1D
MSD-03-KA1E

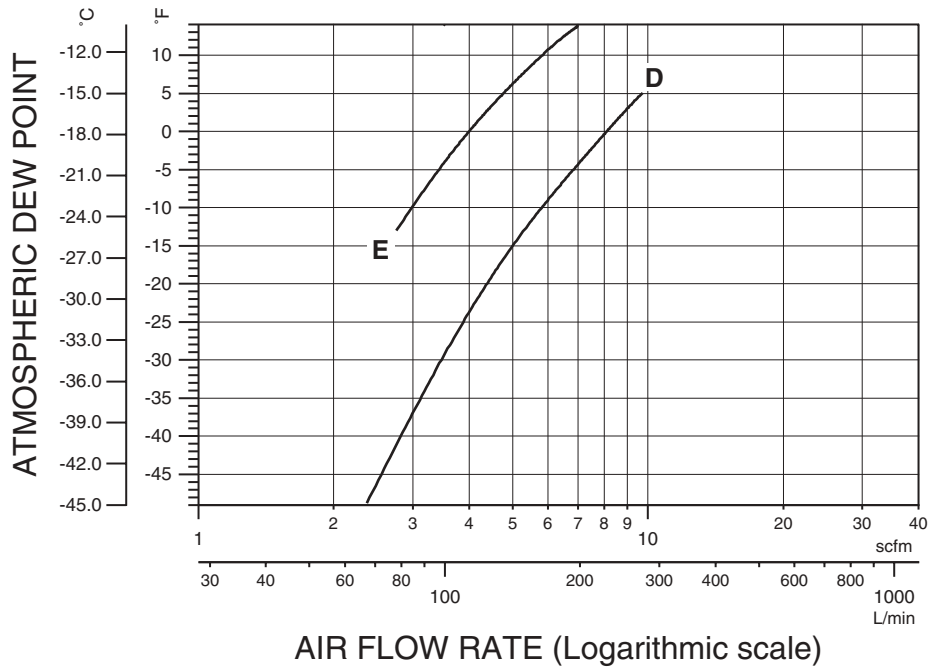


To Read This Graph:

Plot actual application point (dewpoint and adjusted flow rate) on chart.
 Closest curve DOWN and RIGHT of point is correct model for application.

Example: 3 scfm @ 0°F ADP, Model MSD-03-KA1D is correct. (Refer to Dryer Selection instructions on page 8.)

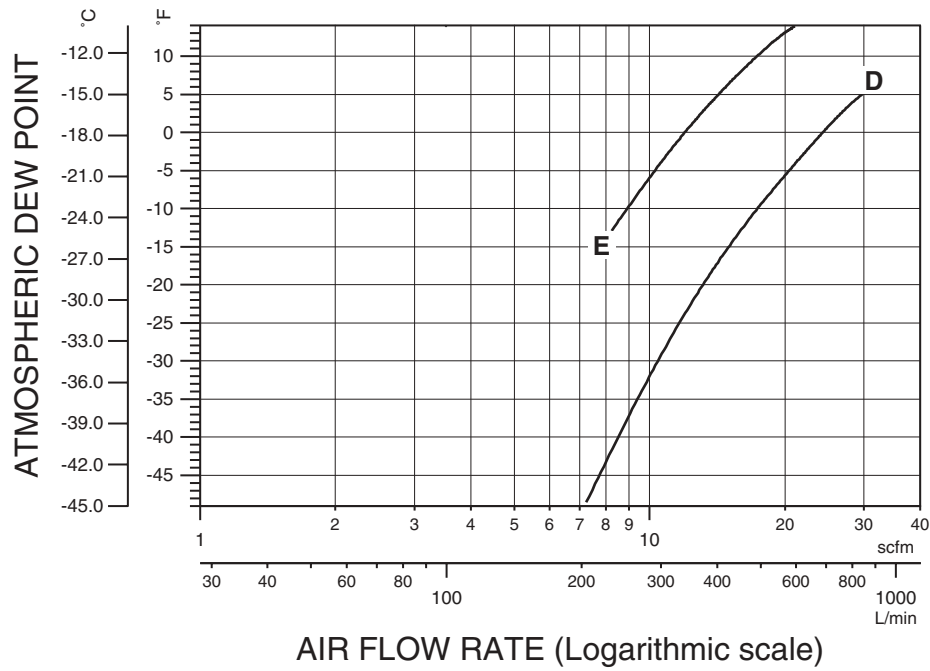
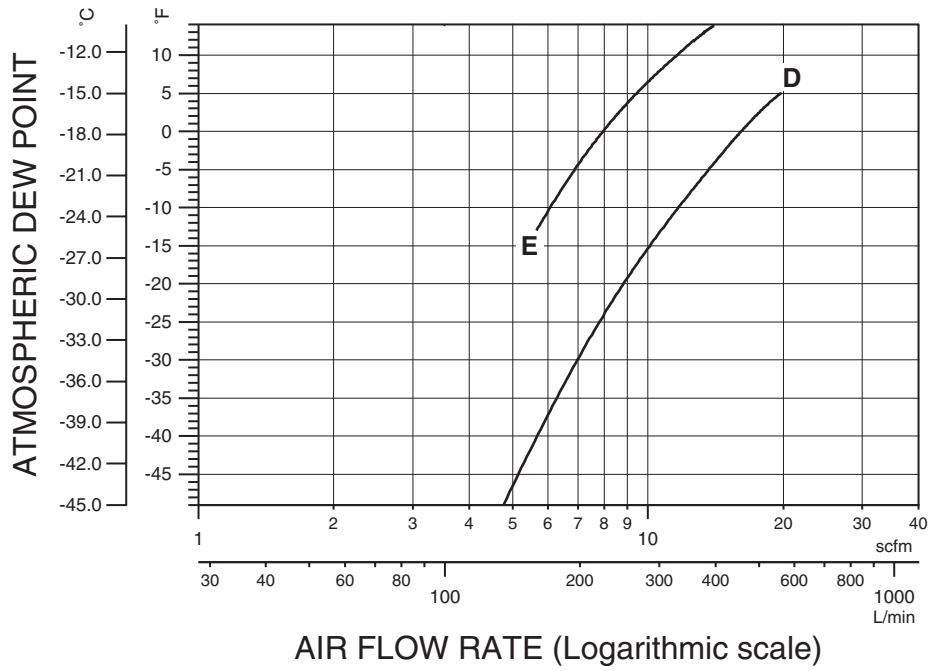
MSD-03-KA2D
MSD-03-KA2E



Tested according to ANSI/CAGI Standard ADF 700, ~ Membrane Compressed Air Dryers — Methods for Testing and Rating

DEWPOINT AT VARIOUS FLOW RATES

MSD-03-KB1D
MSD-03-KB1E



MSD-03-KB2D
MSD-03-KB2E



MEMBRANE DRYER SPECIFICATIONS

ALL MODELS

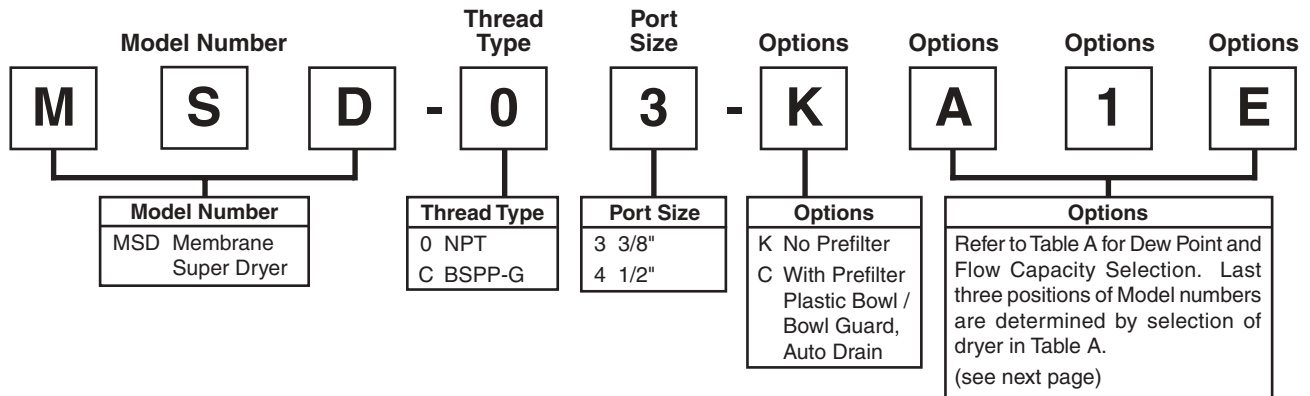
Min./Max. Inlet Air Temp.	40°F (5°C) to 125°F (51°C)
Ambient Temp. Range	40°F (5°C) to 125°F (51°C)
Min/Max. Inlet Pressure	60 psig (4.1 bar) - 150 psig (10.3 bar)
Compressed Air Requirement (@ dryer inlet)	ISO Class 1, — , 1* (0.01 micron coalescing)
Inlet/Outlet Size (NPT, BSPP-G)	3/8, 1/2
Materials of Construction	Body - Zinc Bowl - Aluminum Seals - Nitrile

PRODUCT SPECIFIC

Model Number	MSD-XX-KA1E	MSD-XX-KA2E	MSD-XX-KB1E	MSD-XX-KB2E
Max. Pressure Drop**	1.45 psi (0.099 bar)	1.45 psi (0.099 bar)	3.9 psi (0.269 bar)	4.35 psi (0.299 bar)
Shipping Weight lbs. (kg)	3.1 (1.4)	3.5 (1.6)	4.2 (1.9)	5.3 (2.4)

* ISO Standard 8573-1: 1991 (E), pertaining to maximum particle size and concentration of solid contaminants, and maximum oil content.
 ** Note: Refer to catalog 9EM-TK-190 for performance curves of the M-Series Filters.

HOW TO SELECT YOUR MEMBRANE DRYER KIT



DRYER SELECTION

Table A: MEMBRANE DRYER FLOW CAPACITIES

Model Number	ADP ¹ °F (°C)	Maximum Outlet Air Flow ² scfm (L/min)	Purge Flow scfm (L/min)	Inlet Flow ³ scfm (L/min)
MSD-03-KA1E	-4 (-20)	1.8 (50)	0.3 (8)	2.1 (58)
MSD-03-KA2E	-4 (-20)	3.5 (100)	0.5 (14)	4.0 (114)
MSD-03-KB1E	-4 (-20)	7.1 (200)	1.1 (30)	8.8 (230)
MSD-03-KB2E	-4 (-20)	10.6 (300)	1.6 (44)	12.2 (344)
MSD-03-KA1D	-4 (-20)	3.5 (100)	0.9 (25)	4.4 (125)
MSD-03-KA2D	-4 (-20)	7.1 (200)	1.8 (50)	8.9 (250)
MSD-03-KB1D	-4 (-20)	14.1 (400)	3.5 (100)	17.6 (500)
MSD-03-KB2D	-4 (-20)	21.2 (600)	5.3 (150)	26.5 (750)
MSD-03-KA1D	-40 (-40)	1.4 (40)	0.9 (25)	2.3 (65)
MSD-03-KA2D	-40 (-40)	2.8 (80)	1.8 (50)	4.6 (130)
MSD-03-KB1D	-40 (-40)	5.7 (160)	3.5 (100)	9.2 (260)
MSD-03-KB2D	-40 (-40)	8.5 (240)	5.3 (150)	13.8 (390)

¹ Atmospheric Dew Point

² Flow rates based on: 100 psig (6.9 bar) inlet, 77°F (25°C) inlet air temperature, and 77°F (25°C) ambient temperature. Tested according to ANSI/CAGI Standard ADF 700

³ Required inlet flow is combined outlet flow plus purge flow

Table B:

Pressure Correction Factors
(all models)

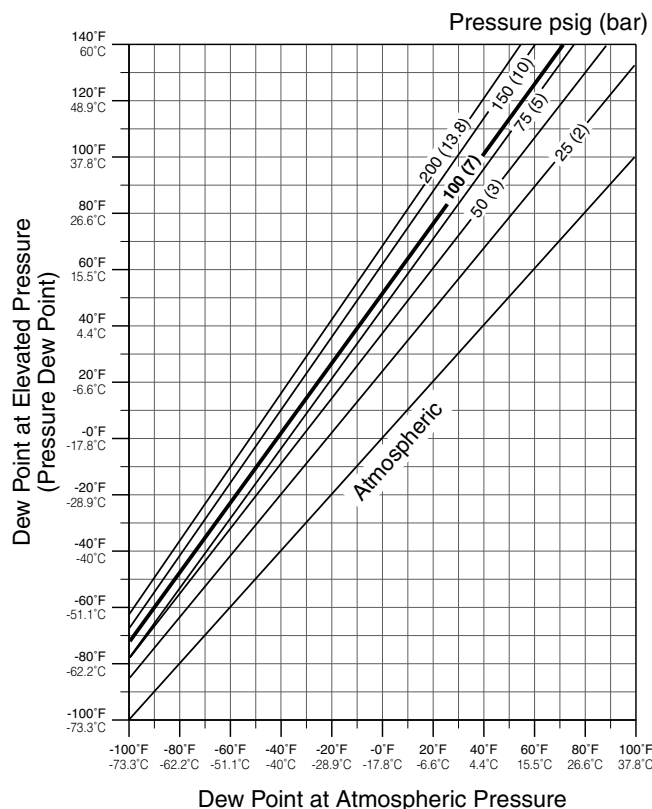
Inlet Pressure psig (bar)	Multiply outlet flow by:
60 (4.1)	0.55
80 (5.5)	0.75
100 (6.9)	1.00
120 (8.3)	1.20
140 (9.6)	1.35
160 (11.0)	1.50

Table C:

**Inlet Air Temperature
Correction Factors**

Inlet Temp °F (°C)	-40°F (-40°C) ADP	-4°F (-20°C) ADP
	Multiply outlet flow by:	
41 (5)	1.28	—
59 (15)	1.10	—
77 (25)	1.00	1.00
95 (35)	0.90	0.85
113 (45)	0.81	0.75
122 (50)	0.80	0.70

**DEW POINT
CONVERSION CHART**



TO SELECT A DRYER FOR YOUR APPLICATION

The outlet flows in Table A are based on 100 psig (6.9 bar) inlet pressure, and 77°F (25°C) inlet air temperature. For proper model selection in your specific application, you must adjust the outlet air flow requirement for the actual inlet air temperature and pressure where the dryer will be installed. This is accomplished by using the correction factors found in Tables B and C (above).

FOR EXAMPLE: If an application which requires a -4°F atmospheric dew point, 8 scfm (226L/min) of air (this would be dryer outlet flow), system pressure (dryer inlet pressure) at 140 psig (9.6 bar), and inlet air temperature of 95°F (35°C). **TO ADJUST FOR PRESSURE:** Take the 8 scfm (226L/min) air flow, and from Table B, **MULTIPLY** by 1.35, which equals 10.8 scfm (306L/min). **THEN, TO ADJUST FOR TEMPERATURE:** Take the 10.8 scfm (306L/min) and from Table C, **MULTIPLY** by 0.85, which equals 9.18 scfm (275 L/min), which is the **ADJUSTED OUTLET AIR FLOW REQUIREMENT FOR THE APPLICATION**. From Table A, the model which would be best suited for this application is the MSD-03-KB2E, which has an outlet air flow of 10.6 scfm (300L/min). On the same line, you will see the purge at rated flow is 1.6 scfm (44L/min), and the **TOTAL INLET FLOW REQUIRED** (outlet + purge) is 12.2 scfm (344L/min) for this model.

Please contact Applications Engineering if your application cannot be adjusted using these tables.

The items described in this document and other documents or descriptions provided by The Company, its subsidiaries and its authorized distributors, are hereby offered for sale at prices to be established by The Company, its subsidiaries and its authorized distributors. This offer and its acceptance by any customer ("Buyer") shall be governed by all of the following Terms and Conditions. Buyer's order for any such item, when communicated to The Company, its subsidiaries or an authorized distributor ("Seller") verbally or in writing, shall constitute acceptance of this offer.

1. Terms and Conditions of Sale: All descriptions, quotations, proposals, offers, acknowledgments, acceptances and sales of Seller's products are subject to and shall be governed exclusively by the terms and conditions stated herein. Buyer's acceptance of any offer to sell is limited to these terms and conditions. Any terms or conditions in addition to, or inconsistent with those stated herein, proposed by Buyer in any acceptance of an offer by Seller, are hereby objected to. No such additional, different or inconsistent terms and conditions shall become part of the contract between Buyer and Seller unless expressly accepted in writing by Seller. Seller's acceptance of any offer to purchase by Buyer is expressly conditional upon Buyer's assent to all the terms and conditions stated herein, including any terms in addition to, or inconsistent with those contained in Buyer's offer. Acceptance of Seller's products shall in all events constitute such assent.

2. Payment: Payment shall be made by Buyer net 30 days from the date of delivery of the items purchased hereunder. Amounts not timely paid shall bear interest at the maximum rate permitted by law for each month or portion thereof that the Buyer is late in making payment. Any claims by Buyer for omissions or shortages in a shipment shall be waived unless Seller receives notice thereof within 30 days after Buyer's receipt of the shipment.

3. Delivery: Unless otherwise provided on the face hereof, delivery shall be made F.O.B. Seller's plant. Regardless of the method of delivery, however, risk of loss shall pass to Buyer upon Seller's delivery to a carrier. Any delivery dates shown are approximate only and Seller shall have no liability for any delays in delivery.

4. Warranty: Seller warrants that the items sold hereunder shall be free from defects in material or workmanship for a period of 18 months from date of shipment from The Company. THIS WARRANTY COMPRISES THE SOLE AND ENTIRE WARRANTY PERTAINING TO ITEMS PROVIDED HEREUNDER. SELLER MAKES NO OTHER WARRANTY, GUARANTEE, OR REPRESENTATION OF ANY KIND WHATSOEVER. ALL OTHER WARRANTIES, INCLUDING BUT NOT LIMITED TO, MERCHANTABILITY AND FITNESS FOR PURPOSE, WHETHER EXPRESS, IMPLIED, OR ARISING BY OPERATION OF LAW, TRADE USAGE, OR COURSE OF DEALING ARE HEREBY DISCLAIMED.

NOTWITHSTANDING THE FOREGOING, THERE ARE NO WARRANTIES WHATSOEVER ON ITEMS BUILT OR ACQUIRED WHOLLY OR PARTIALLY, TO BUYER'S DESIGN OR SPECIFICATIONS.

5. Limitation of Remedy: SELLER'S LIABILITY ARISING FROM OR IN ANY WAY CONNECTED WITH THE ITEMS SOLD OR THIS CONTRACT SHALL BE LIMITED EXCLUSIVELY TO REPAIR OR REPLACEMENT OF THE ITEMS SOLD OR REFUND OF THE PURCHASE PRICE PAID BY BUYER, AT SELLER'S SOLE OPTION. IN NO EVENT SHALL SELLER BE LIABLE FOR ANY INCIDENTAL, CONSEQUENTIAL OR SPECIAL DAMAGES OF ANY KIND OR NATURE WHATSOEVER, INCLUDING BUT NOT LIMITED TO LOST PROFITS ARISING FROM OR IN ANY WAY CONNECTED WITH THIS AGREEMENT OR ITEMS SOLD HEREUNDER, WHETHER ALLEGED TO ARISE FROM BREACH OF CONTRACT, EXPRESS OR IMPLIED WARRANTY, OR IN TORT, INCLUDING WITHOUT LIMITATION, NEGLIGENCE, FAILURE TO WARN OR STRICT LIABILITY.

6. Changes, Reschedules and Cancellations: Buyer may request to modify the designs or specifications for the items sold hereunder as well as the quantities and delivery dates thereof, or may request to cancel all or part of this order, however, no such requested modification or cancellation shall become part of the contract between Buyer and Seller unless accepted by Seller in a written amendment to this Agreement. Acceptance of any such requested modification or cancellation shall be at Seller's discretion, and shall be upon such terms and conditions as Seller may require.

7. Special Tooling: A tooling charge may be imposed for any special tooling, including without limitations, dies, fixtures, molds and patterns, acquired to manufacture items sold pursuant to this contract. Such special tooling shall be and remain Seller's property notwithstanding payment of any charges by Buyer. In no event will Buyer acquire any interest in apparatus belonging to Seller which is utilized in the manufacture of the items sold hereunder, even if such apparatus has been specially converted or adapted for such manufacture and

notwithstanding any charges paid by Buyer. Unless otherwise agreed, Seller shall have the right to alter, discard or otherwise dispose of any special tooling or other property in its sole discretion at any time.

8. Buyer's Property: Any designs, tools, patterns, materials, drawings, confidential information or equipment furnished by Buyer, or any other items which become Buyer's property, may be considered obsolete and may be destroyed by Seller after two (2) consecutive years have elapsed without Buyer placing an order for the items which are manufactured using such property. Seller shall not be responsible for any loss or damage to such property while it is in Seller's possession or control.

9. Taxes: Unless otherwise indicated on the face hereof, all prices and charges are exclusive of excise, sales, use, property, occupational or like taxes which may be imposed by any taxing authority upon the manufacture, sale or delivery of the items sold hereunder. If any such taxes must be paid by Seller or if Seller is liable for the collection of such tax, the amount thereof shall be in addition to the amounts for the items sold. Buyer agrees to pay all such taxes or to reimburse Seller therefore upon receipt of its invoice. If Buyer claims exemption from any sales, use or other tax imposed by any taxing authority, Buyer shall save Seller harmless from and against any such tax, together with any interest or penalties thereon which may be assessed if the items are held to be taxable.

10. Indemnity For Infringement of Intellectual Property Rights: Seller shall have no liability for infringement of any patents, trademarks, copyrights, trade dress, trade secrets or similar rights except as provided in this Part 10. Seller will defend and indemnify Buyer against allegations of infringement of U.S. patents, U.S. trademarks, copyrights, trade dress and trade secrets (hereinafter "Intellectual Property Rights"). Seller will defend at its expense and will pay the cost of any settlement or damages awarded in an action brought against Buyer based on an allegation that an item sold pursuant to this contract infringes the Intellectual Property Rights of a third party. Seller's obligation to defend and indemnify Buyer is contingent on Buyer notifying Seller within ten (10) days after Buyer becomes aware of such allegations of infringement, and Seller having sole control over the defense of any allegations or actions including all negotiations for settlement or compromise. If an item sold hereunder is subject to a claim that it infringes the Intellectual Property Rights of a third party, Seller may, at its sole expense and option, procure for Buyer the right to continue using said item, replace or modify said item so as to make it noninfringing, or offer to accept return of said item and return the purchase price less a reasonable allowance for depreciation. Notwithstanding the foregoing, Seller shall have no liability for claims of infringement based on information provided by Buyer, or directed to items delivered hereunder for which the designs are specified in whole or part by Buyer, or infringements resulting from the modification, combination or use in a system of any item sold hereunder. The foregoing provisions of this Part 10 shall constitute Seller's sole and exclusive liability and Buyer's sole and exclusive remedy for infringement of Intellectual Property Rights.

If a claim is based on information provided by Buyer or if the design for an item delivered hereunder is specified in whole or in part by Buyer, Buyer shall defend and indemnify Seller for all costs, expenses or judgements resulting from any claim that such item infringes any patent, trademark, copyright, trade dress, trade secret or any similar right.

11. Force Majeure: Seller does not assume the risk of and shall not be liable for delay or failure to perform any of Seller's obligations by reason of circumstances beyond the reasonable control of Seller (hereinafter "Events of Force Majeure"). Events of Force Majeure shall include without limitation, accidents, acts of God, strikes or labor disputes, acts, laws, rules or regulations of any government or government agency, fires, floods, delays or failures in delivery of carriers or suppliers, shortages of materials and any other cause beyond Seller's control.

12. Entire Agreement/Governing Law: The terms and conditions set forth herein, together with any amendments, modifications and any different terms or conditions expressly accepted by Seller in writing, shall constitute the entire Agreement concerning the items sold, and there are no oral or other representations or agreements which pertain thereto. This Agreement shall be governed in all respects by the law of the State of Ohio. No actions arising out of sale of the items sold hereunder or this Agreement may be brought by either party more than two (2) years after the cause of action accrues.

WILKERSON®

Wilkerson
Pneumatic Division
8676 E. M89
P.O. Box 901
Richland, MI 49083 USA

Customer/Technical Service

Tel: (269) 629-2550
Fax: (269) 629-2475
Web site: www.wilkersoncorp.com