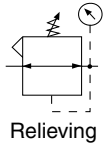
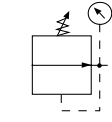


## RA4 Miniature Regulator



Relieving



Non-Relieving



RA4-02-F000

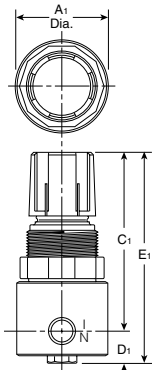


RA4-0M-F000

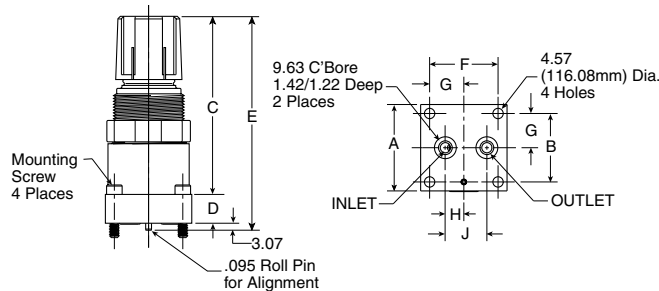
### Features

- Diaphragm operated for fast operation.
- Large Diaphragm to valve area ratio for precise regulation and high flow capacity.
- Balanced valve design for precise regulation.
- Available in 2 or 4 port design.
- Available with a manifold mount to minimize plumbing.
- Suitable for low temperature applications.
- Non-rising adjusting knob.
- 1/8" - xxx SCFM\*
- 1/4" - xxx SCFM\*

\* SCFM = Standard cubic feet per minute at 100 PSIG inlet, 90 PSIG no flow secondary setting and 10 PSIG pressure drop.



RA4-02-F000



RA4-0M-F000

### Dimensions

Models	Inches (mm)	A	A1	B	B1	C	C1	D	D1	E	E1	F	G	H	J
Brass Regulator - Miniature RA4-XX-XXXX		1.5 (38.1)	1.56 (39.7)	1.2 (30.18)	1.56 (39.7)	2.75 (69.92)	2.7 (68.7)	.5 (12.7)	.54 (13.9)	3.25 (82.62)	3.25 (82.62)	1.2 (30.18)	.6 (15.09)	.32 (8.26)	.73 (18.42)

### Materials of Construction

Body .....	Aluminum
Bonnet .....	Acetal
Diaphragm & Seals.....	Nitrile
Valve Assembly .....	Brass
Springs .....	Steel
Panel Nut.....	Acetal

### Specifications

Operating Temperature.....	-20° F to 150° F (-29° C to 65.5° C)
Supply Pressure .....	300 PSIG Maximum (20.4 bar)
Port Threads .....	1/8, 1/4 Inch
Gauge Ports .....	(2) Std 1/8 Inch (No Gauge Port Version Available)
Weight .....	.25 lbs. (0.11 kg)

### ⚠ WARNING

**Product rupture can cause serious injury.  
Do not connect regulator to bottled gas.  
Do not exceed maximum primary pressure rating.**

### CAUTION:

**REGULATOR PRESSURE ADJUSTMENT** – The working range of knob adjustment is designed to permit outlet pressures within their full range. Pressure adjustment beyond this range is also possible because the knob is not a limiting device. This is a common characteristic of most industrial regulators, and limiting devices may be obtained only by special design.

For best performance, regulated pressure should always be set by increasing the pressure up to the desired setting.

## Replacement Kits

### Diaphragm Assembly -

- Non-relieving ..... GRP-96-726
- Relieving ..... GRP-96-725

### Spring, Regulating -

- 0 to 30 PSIG (0 to 2.1 bar) ..... GRP-95-111
- 0 to 60 PSIG (0 to 4.1 bar) ..... GRP-96-718
- 0 to 125 PSIG (0 to 8.6 bar) ..... GRP-96-717
- Valve Assembly ..... RRP-96-727
- Valve Spring ..... RRP-96-728

### Accessories

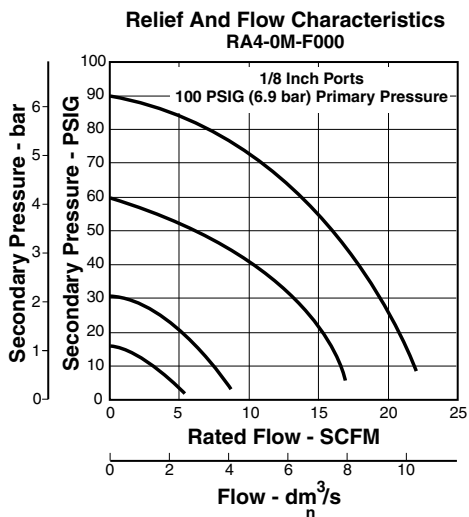
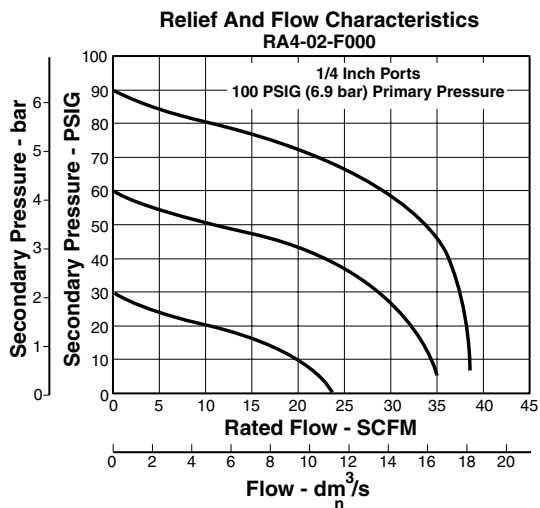
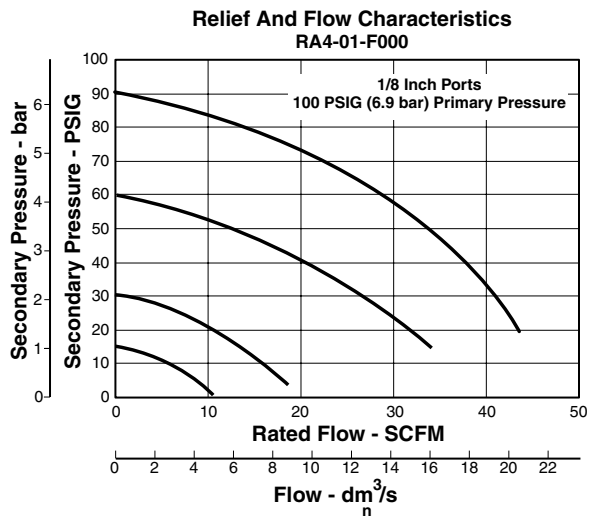
- Adjusting Knob ..... RRP-16-005-000

### Panel Mount Nut -

- Aluminum ..... RPA-96-733
- Plastic ..... RPA-96-734

### Gauges

- 0 to 60 PSIG (0 to 4.1 bar), 1-1/2" Dial Face, 1/8 NPT, CBM ..... K4515N18060
- 0 to 160 PSIG (0 to 11.0 bar), 1-1/2" Dial Face, 1/8 NPT, CBM ..... K4515N18160
- Tamper Resistant Kit ..... RPA-96-735



## Ordering Information

  = "Most Popular"

Model Type	Port Size	Without Gauge 0 to 30 PSIG (0.0 to 2.1 bar)	Without Gauge 0 to 60 PSIG (0.0 to 4.1 bar)	Without Gauge 0 to 125 PSIG (0.0 to 8.6 bar)	With Gauge 0 to 30 PSIG (0.0 to 2.1 bar)	With Gauge 0 to 60 PSIG (0.0 to 4.1 bar)	With Gauge 0 to 125 PSIG (0.0 to 8.6 bar)
Relieving	1/8"	RA4-01-C000	RA4-01-D000	RA4-01-F000	RA4-01-C0G0	RA4-01-D0G0	RA4-01-F0G0
	1/4"	RA4-02-C000	RA4-02-D000	RA4-02-F000	RA4-02-C0G0	RA4-02-D0G0	RA4-02-F0G0
	Manifold Mount	RA4-0M-C000	RA4-0M-D000	RA4-0M-F000			
Non-relieving	1/8"	RA4-01-P000	RA4-01-W000	RA4-01-R000	RA4-01-P0G0	RA4-01-W0G0	RA4-01-R0G0
	1/4"	RA4-02-P000	RA4-02-W000	RA4-02-R000	RA4-02-P0G0	RA4-02-W0G0	RA4-02-R0G0
	Manifold Mount	RA4-0M-P000	RA4-0M-W000	RA4-0M-R000			