



Accessories

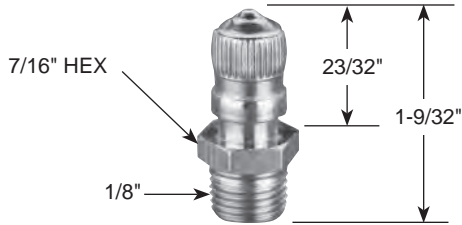
Tank Valves & Air Chucks.....	G54	Muffler-Reclassifier ECS	G59
EM Series Exhaust Mufflers.....	G55	Automatic Drip Leg Drain & Relief Valve.....	G60
Muffler / Flow Controls	G55	Relief Valves - Diaphragm Type.....	G61
Breather Vents	G56	Shuttle Valves & Quick Exhaust	G62-G64
ES Series Silencer	G56	AirGuard Protection System.....	G65-G66
ASN Air Line Silencer.....	G57	Drain Valves.....	G67-G68
P6M Air Line Silencer	G58	Safety Blow Guns	G69-G71

Tank Valves

For tanks, steel barrels, compressors and other pneumatic containers where a dependable automatic air valve is needed. Equipped with standard valve core and sealing cap. Maximum operating pressure is 185 PSIG. Temperature range is -40°F to 220°F.

Model No. 09166 0060

Has a 1/8" pipe thread at bottom for minimum protrusion. N/P finish, dome shaped cap. Packed 25 to a box.



Air Chucks

For regular airlines.

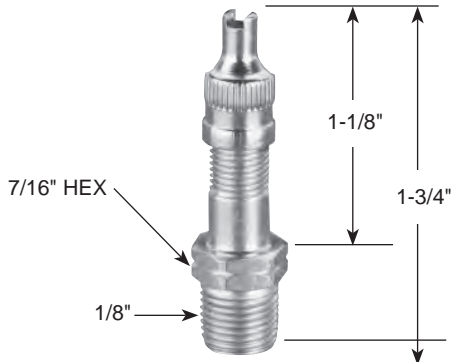
Model No. 05499 0000

Ball-foot air chuck, 1/4" female port. Packed 10 to a box.



Model No. 00645 0060

A 1/8" pipe thread at bottom permits maximum protrusion. N/P finish, screwdriver type cap. Packed 25 to a box.



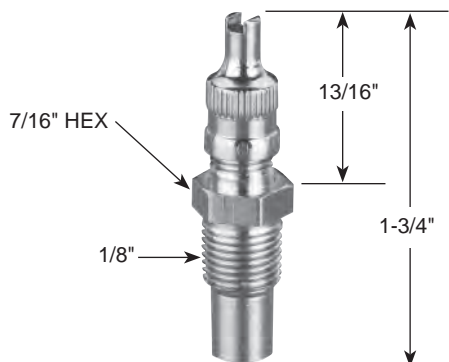
Model No. 06739 0000

Ball-foot air chuck with clip. Fits standard valve mouth. Saves holding on by hand. Has 1/4" port for connecting to hose. Packed 10 to a box.



Model No. 01468 0006

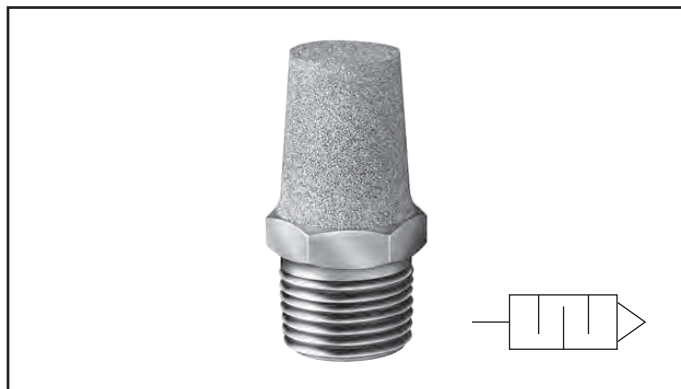
Has a 1/8" pipe thread part way up the stem which allows for minimum protrusion. N/P finish, has screwdriver type cap. Packed 25 to a box.



G

Airline Accessories

EM Series – Sintered Bronze Muffler / Filters



General Description

Muffler / filters effectively reduce air exhaust noises to an industry accepted level with minimum flow restriction. They protect valves, impact wrenches, screw drivers and other air tools by preventing dirt and other foreign matter from entering the system. Non-corrosive. Can be cleaned with many common solvents.

Specifications

Maximum Operating Pressure 250 PSIG (Air)
Operating Temperature 0° to 300°F*

* Ambient temperatures below freezing require moisture-free air. Ambient temperatures below freezing and above 180° require lubricants especially selected for suitability at these temperatures. Pneumatic valves should be used with filtered and lubricated air.

Model Number	Pipe Thread	Overall Length	Hex Size
EM12	1/8"	1.00	7/16"
EM25	1/4"	1.32	9/16"
EM37	3/8"	1.54	11/16"
EM50	1/2"	1.85	7/8"
EM75	3/4"	2.29	1-1/6"
EM100	1"	2.91	1-5/16"
EM125	1-1/4"	3.25	1-11/16"
EM150	1-1/2"	3.69	2"

Muffler / Flow Controls



General Description

Muffler / flow controls provide an acceptable exhaust noise level and effectively meter exhaust. Installed in valve exhaust ports, they control cylinder piston speeds throughout a wide range. The adjusting screw cannot be accidentally blown out, can be locked to maintain setting. Brass and bronze construction. Clean with commonly used solvents.

Specifications

Maximum Operating Pressure 250 PSIG (Air)
Operating Temperature 0° to 300°F*

* Ambient temperatures below freezing require moisture-free air. Ambient temperatures below freezing and above 180° require lubricants especially selected for suitability at these temperatures. Pneumatic valves should be used with filtered and lubricated air.

Model Number	Pipe Thread	Overall Length	Hex Size
04502 0002	1/8"	1.15	9/16"
04504 0004	1/4"	1.42	1/2"
04506 0060	3/8"	1.49	11/16"
04508 0080	1/2"	1.77	7/8"
04512 0012	3/4"	1.98	1-1/16"
04516 0016	1"	2.15	1-5/16"

Breather Vents



NOTE: Breather vents should not be used as exhaust mufflers.

General Description

These low silhouette versions of the muffler / filter are useful where space is a problem and / or to prevent contamination. Use for vacuum relief or pressure equalization in gear boxes, oil tanks, reservoirs, etc. Non-corrosive.

Specifications

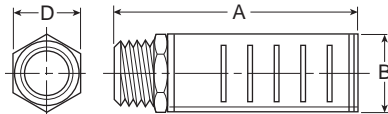
Maximum Operating Pressure 150 PSIG (Air)

Operating Temperature 0° to 300°F*

* Ambient temperatures below freezing require moisture-free air. Ambient temperatures below freezing and above 180° require lubricants especially selected for suitability at these temperatures. Pneumatic valves should be used with filtered and lubricated air.

Model Number	Pipe Thread	Overall Length	Hex Size
04702 0002	1/8"	0.44	7/16"
04704 0004	1/4"	0.63	9/16"
04706 0006	3/8"	0.75	11/16"
04708 0008	1/2"	0.88	7/8"
04712 0012	3/4"	1.00	1-1/6"
04716 0016	1"	1.31	1-5/16"
04720 0020	1-1/4"	1.41	1-11/16"
04724 0024	1-1/2"	1.50	2"

ES Series – Silencer



General Description

The silencer is designed to give superior performance in noise control with a minimum effect on air efficiency. "Trimline" design allows location in the tightest places without extra plumbing and fittings. Fits directly into the exhaust port of more than 90% of present commercial valves. Slotted body permits rapid discharge of air without undesirable back pressure. Unique nylon screen element resists dirt buildup or clogging.

Specifications

Maximum Operating Pressure 250 PSIG (Air)

Operating Temperature 0° to 300°F*

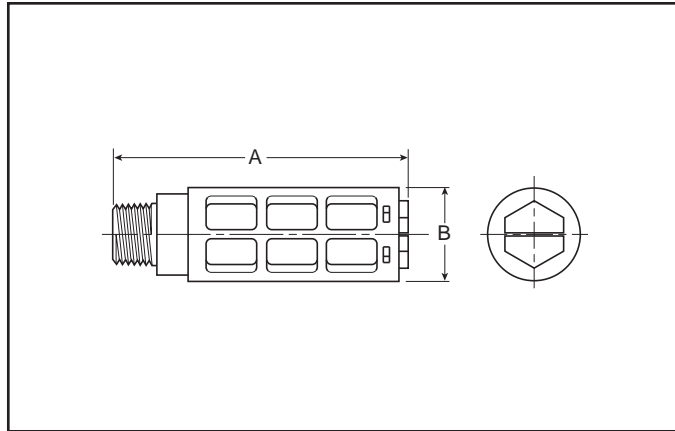
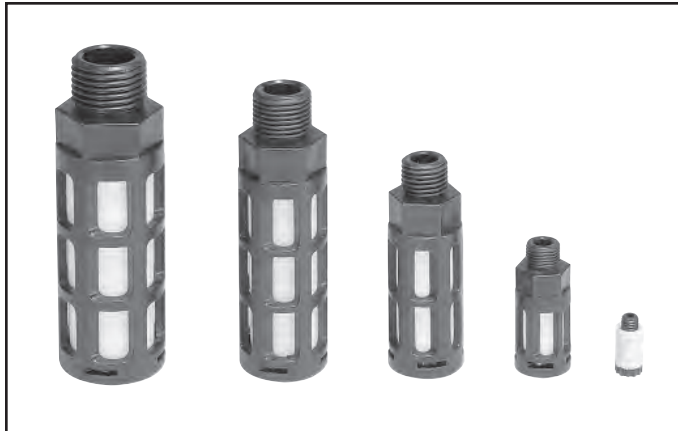
* Ambient temperatures below freezing require moisture-free air. Ambient temperatures below freezing and above 180° require lubricants especially selected for suitability at these temperatures. Pneumatic valves should be used with filtered and lubricated air.

Model Numbers		Pipe Thread	Flow SCFM @ 100 PSIG Inlet	Dimensions		
NPTF	BSPT (R)			A	B	D
ES12MC	ESB12MC	1/8"	115	1.85	0.81	0.63
ES25MC	ESB25MC	1/4"	129	1.85	0.81	0.63
ES37MC	ESB37MC	3/8"	219	3.31	1.26	1.00
ES50MC	ESB50MC	1/2"	549	3.31	1.26	1.00
ES75MC	ESB75MC	3/4"	893	4.56	2.01	1.62
ES100MC	ESB100MC	1"	1,013	4.56	2.01	1.62
ES125MC	ESB125MC	1-1/4"	1,486	5.69	2.88	—
ES150MC	ESB150MC	1-1/2"	1,580	5.69	2.88	—

G

Airline Accessories

ASN Series – Air Line Silencer



Features

- Compact
- Lightweight
- Easy to Install
- Excellent Noise Reduction
- Protects Components from Contamination
- NPT and BSPT Threads Available

Part Number		Thread Size	A (mm)	B (mm)	Maximum Flow (SCFM) 100 PSIG Inlet	Sound Pressure Level (dBA)	
NPT	BSPT					20 PSIG Inlet	100 PSIG Inlet
AS-5		M5	0.43 (11)	0.32 (8)	15	69	79
ASN-6	AS-6	1/8"	1.57 (40)	0.63 (16)	51	69	81
ASN-8	AS-8	1/4"	2.56 (65)	0.83 (21)	124	67	84
ASN-10	AS-10	3/8"	3.35 (85)	0.98 (25)	247	83	98
ASN-15	AS-15	1/2"	3.74 (95)	1.18 (30)	370	69	96

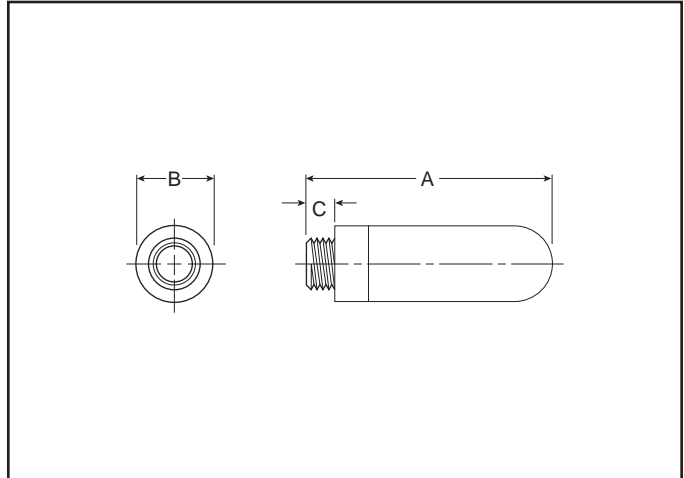
Application

The plastic silencer is designed to give excellent noise reduction with a minimum effect on air efficiency. The "Trimline" design allows for locating the silencer in the tightest places without extra plumbing or fittings. Fits directly into the exhaust port of most commercial valves. Open surface area of element allows for rapid discharge of air without undesirable back pressure.

Specifications

Pressure Rating.....0 to 150 PSIG
 (0 to 10 bar, 0 to 1034 kPa)
 Temperature Rating 14°F to 140°F (-10°C to 60°C)
 BodyAcetal (Plastic)
 ElementPolyethylene

P6M Series – Air Line Silencer



Features

- All Plastic Ultra Light Weight Versions
- High Noise Level Reduction
- Low Back Pressure Generation

Application

The plastic silencer is designed to give excellent noise reduction with a minimum effect on air efficiency. The “Trimline” design allows for locating the silencer in the tightest places without extra plumbing or fittings. Fits directly into the exhaust port of most commercial valves. Open surface area of element allows for rapid discharge of air without undesirable back pressure.

Part Number	Port Thread	A	Diameter B	C	Weight (grams)
P6M-PAC5	M5	0.91 (23)	0.26 (6,5)	0.16 (4)	0.01
P6M-PAB1	G1/8	1.14 (29)	0.55 (14)	0.24 (6)	0.02
P6M-PAB2	G1/4	1.34 (34)	0.67 (17)	0.24 (6)	0.04
P6M-PAB3	G3/8	2.36 (60)	0.98 (25)	0.35 (9)	0.06
P6M-PAB4	G1/2	2.52 (64)	0.98 (25)	0.43 (11)	0.10
P6M-PAB6	G3/4	5.51 (140)	1.50 (38)	0.55 (14)	0.50
P6M-PAB8	G1	6.30 (160)	1.89 (48)	0.79 (20)	0.62

Specifications

Pressure Rating.....0 to 246 PSIG
(0 to 17 bar, 0 to 1700 kPa)

Temperature Rating

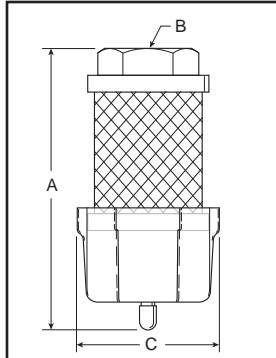
Plastic 14°F to 176 °F (-10°C to 80°C)
Metal..... 14°F to 165 °F (-10°C to 74°C)

Efficiency 92%

G

Airline Accessories

ECS Series – Air Line Muffler / Reclassifier



Dimensions:

Model	A	B	C
ECS3	5.30 (135 mm)	1/2" NPT	2.57 (65 mm)
ECS5	7.30 (185mm)	1" NPT	2.57 (65mm)

Operation

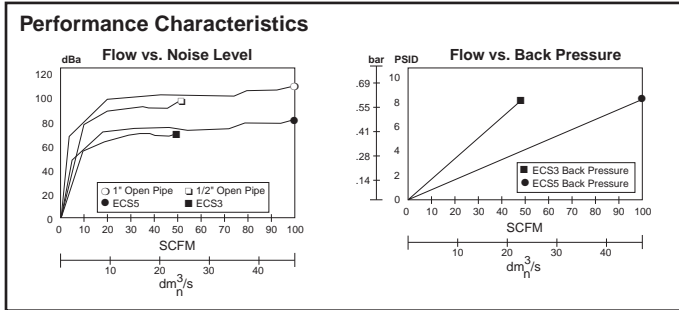
Compressor oils and lubricating oils are exhausted from valves, cylinders and air motors into the ECS. Oil aerosols are “coalesced” into larger droplets and gravity pulls them into the attached drain sump. The sump can then be drained manually or by using a 1/4" ID plastic tube drain. The air flowing into the ECS is also muffled or silenced as it enters the inside of the ECS and passes through the filter media into the atmosphere.

Proven Technology

The ECS units are constructed from the same materials that go into our oil removal coalescing filter elements.

The seamless design insures media uniformity and strength. This proven technology provides high coalescing efficiency with low pressure drop.

The filter media is supported by cylindrical perforated steel retainers both inside and out. These retainers, fully plated for excellent corrosion resistance, give the ECS units high rupture strength in either flow direction. These filters can also be used as high efficiency inlet or bypass filters for vacuum pumps, or breather elements to protect the air above critical process liquids.



Features

The ECS (Muffler-Reclassifier) eliminates unwanted oil mist and reduces exhaust noise from pneumatic valves, cylinders and air motors.

- 99.97% Oil Removal Efficiencies
- 25 dBA Noise Attenuation
- 1/2" NPT and 1" NPT
- Disposable Units
- Continuous or Plugged Drain Option
- Metal Retained Construction
- Fast Exhaust Time

Improve Overall Plant Environment

Exhaust oil mist and noise pollution have a direct impact on worker productivity.

Oil aerosol mist from lubricators and compressors is pervasive and enters the industrial plant environment through the exhaust ports of valves, cylinders and air motors. This rapidly expanding exhaust also produces sudden and excessive noise.

The ECS (Muffler-Reclassifier) is 99.97% efficient at removing the oil aerosols. The ECS also acts as a silencer to lower the dBA levels below O.S.H.A. requirements.

The result is a cleaner, quieter environment which equates to greater work productivity and safety.

ECS3 / ECS5

The ECS solves two problems inherent in compressed air exhaust from valves, cylinders and air motors - oil mist removal and noise abatement.

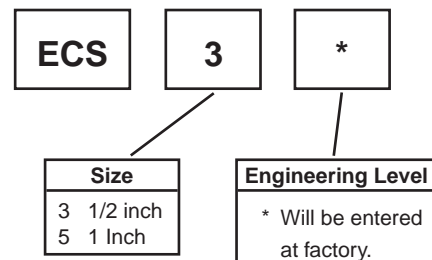
The ECS will improve your industrial plant environment, thereby improving worker productivity.

Specifications

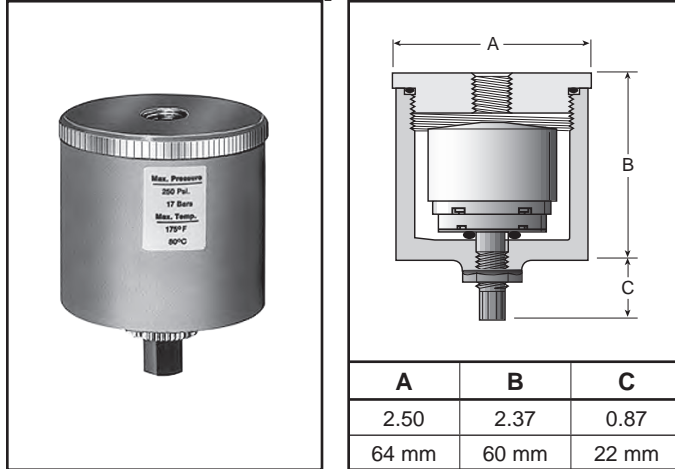
Maximum Operating Temperature125°F (52°C)

Maximum Line Pressure..... 100 PSIG (6.8 bar)

Ordering Information



Automatic Drip Leg Drain



Features

- Auto Drain Ported 1/8" to Pipe Away Liquid.
- Drain has Manual Override
- Easily Serviced without Tool
- 20-250 PSIG Range
- Compact Size

Specifications

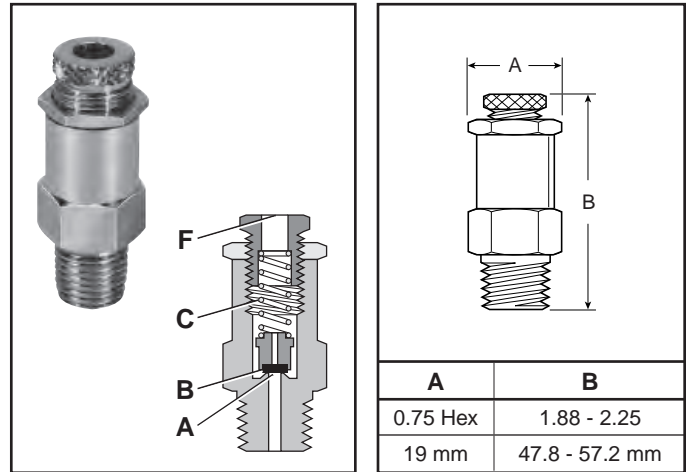
Housing & Cap	Aluminum
Port Threads	1/4" - 1/2" Top 1/8" Drain
Pressure and Temperature Ratings:	
Metal Bowl	20 to 250 PSIG (0 to 17.2 bar) 32°F to 175°F (0°C to 80°C)
Seals	Buna N

Ordering Information

Consists of Drip Leg Drain Housing WITH Auto Drain.

Model No.	Size
06D1NA	1/4"
06D3NA	1/2"

Relief Valve



Features

- Large Relief Capacity (70.39 SCFM @ 150 PSI when fully opened) in a Compact Size
- Lightweight Aluminum Construction with Resilient Seat

Application

The RV01A1N Pop Off Relief Valve is designed to protect against excessive pressure buildup in a pneumatic circuit or system.

Operation*

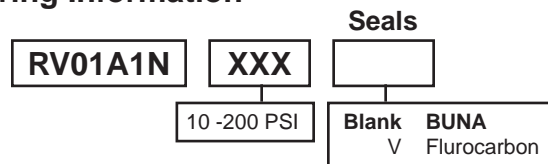
With the relief valve mounted in a reservoir or system, the force of system pressure at (A) is offset by the force of spring (C) acting on poppet seat (B). At pressures lower than the setting, the poppet seat (B) is held against the body at (A) effecting a seal. As pressure approaches set point, the poppet begins to vent until set point is reached, at which time the poppet seat (B) lifts off the body at (A) allowing the excess pressure to vent to atmosphere at (F). When the excess pressure has been vented, the spring (C) acts on the poppet seat (B) forcing it to seat on the body at (A), sealing off the flow of air.

Specification

Body & Adjusting Screw	Aluminum
Locking Nut	Steel
Seat	Nitrile
Spring	Steel
Poppet	Plastic
Operating Temperature	32°F to 200°F (0°C to 93°C)
Port Threads	1/4 Inch Male
Relief Range	10 to 200 PSIG (.7 to 14 bar) with standard spring.

* Ref: 1RV100B Installation & Service Instructions

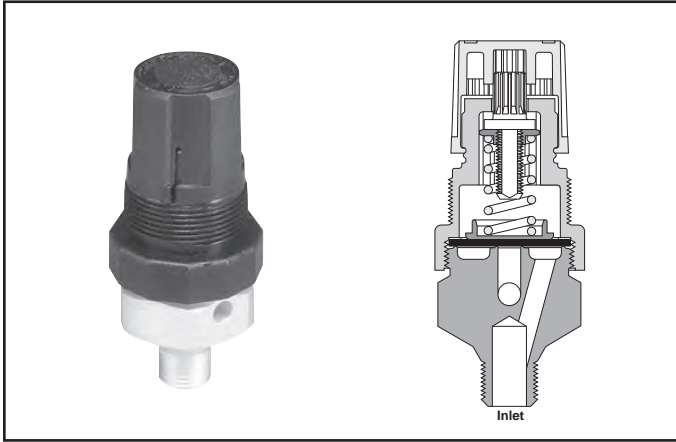
Ordering Information



G

Airline Accessories

130 Relief Valve



Features

- Compact, Sensitive Diaphragm-type Relief Valve
- Push-pull, Locking Knob
- Knob and Top Work the Same as a Miniature Regulator
- 130 has Lightweight Aluminum Construction
- 134 has a brass body, captured exhaust and is an Inline Type with 3 Inlet Ports and 1 Outlet Port

Applications

- Designed to Protect Against Excessive Pressure Buildup in a Pneumatic Circuit or System
- For Use where Gradual Proportional Relief is Required

Operation

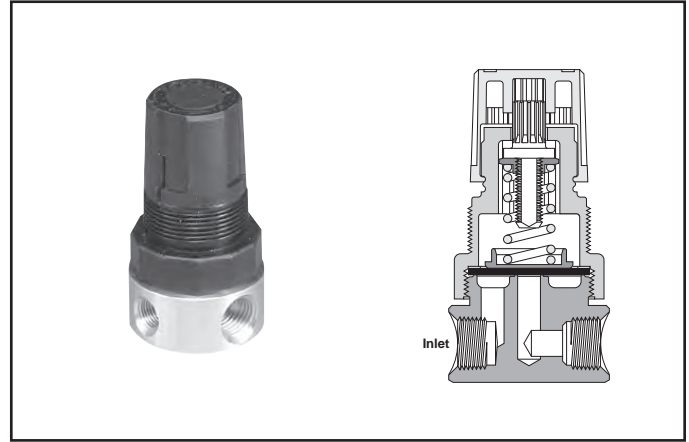
- Turn relief valve knob clockwise for maximum pressure.
- Set pressure going into relief valve at desired pressure.
- Turn relief valve knob counter-clockwise until exhaust starts to bleed.
- Turn relief valve knob clockwise until exhaust stops bleeding. Push to lock knob.

Ordering Information

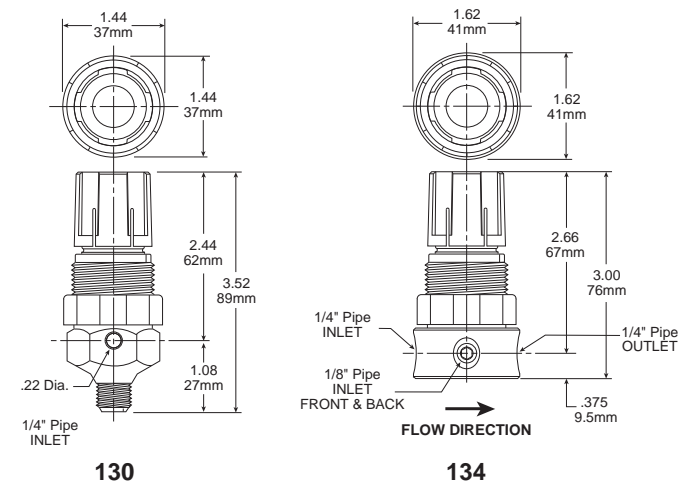
Relief Valve	Spring Range			
	0-15 PSIG	0-25 PSIG	0-50 PSIG	0-100 PSIG
130	130-02AA	130-02A	130-02B	130-02C
	130-02AAP*	130-02AP*	130-02BP*	130-02CP*
134	134-02AA	134-02A	134-02B	134-02C
	134-02AAP*	134-02AP*	134-02BP*	134-02CP*

* Panel mount nut included.

134 Relief Valve



Dimensions



Relief Valve Kits

- Bonnet Assembly Kit** PCKR364Y
- Panel Mount Nut** PR05X51

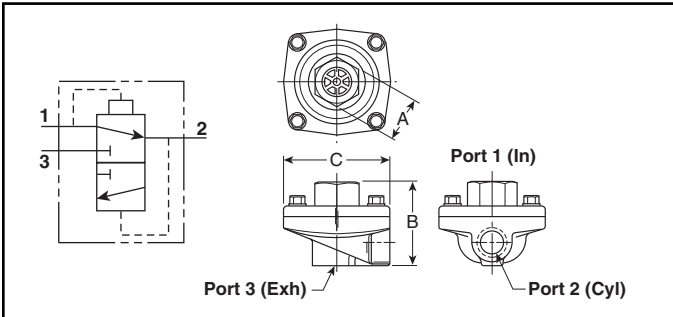
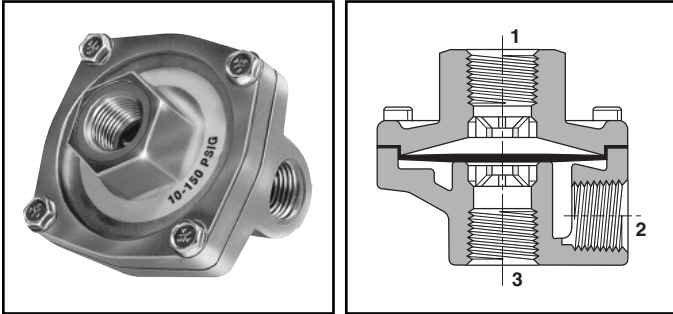
Specifications

- Relief Range** 0 to 100 PSIG (0 to 6.9 bar)
- Maximum Inlet Pressure** 300 PSIG (20.7 bar)
- Operating Temperature** 40°F to 120°F (4°C to 49°C)
- Port Threads:**
- 130** 1/4" Pipe Male Only
- 134** Inlet Port – Two 1/8" & One 1/4" Pipe
Outlet Port – 1/4" Pipe

Materials of Construction

- Adjusting Knob** Polypropylene
- Adjusting Screw** Zinc-plated Steel
- Body** Aluminum (130); Brass (134)
- Diaphragm / Disc** Buna-N
- Nut** Chromated Steel
- Spring Cage** Acetal
- Spring** Zinc-plated Steel

Quick Exhaust & Shuttle Valves



Valve Specifications

Operating Pressure (Air)

Maximum:

150 PSIG
200 PSIG for Model No. 0R37TB (PTFE diaphragm)

Minimum:

3 PSIG
50 PSIG for Model No. 0R37TB (PTFE diaphragm)

Operating Temperature:

Urethane: 0°F to 180°F* (-18°C to 80°C)
Nitrile: 0°F to 180°F* (-18°C to 80°C)
Fluorocarbon: 0°F to 400°F* (-18°C to 205°C)
PTFE: 0°F to 500°F* (-18°C to 260°C)

* Ambient temperatures below freezing require moisture-free air.
Ambient temperatures below freezing and above 180° require lubricants especially selected for suitability at these temperatures.
Pneumatic valves should be used with filtered and lubricated air.

Component Materials

Body Material..... Die cast aluminum
Static Seals Nitrile standard with urethane (Others see below)
Diaphragm Standard – Urethane
Optional – Fluorocarbon, PTFE, or Nitrile (Depending on size)

General Information

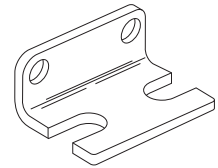
Quick exhaust valves provide rapid exhaust of control air when placed between control valve and actuator. They can also be used as shuttle valves. Diaphragm materials are available in urethane, Nitrile, Fluorocarbon, and PTFE to meet a wide variety of operating conditions.

Mounting Bracket Kit –

No. 036408100

(Including body screws)

For “0R12” and “0R25” sizes with 7/8” “A” Dimension.



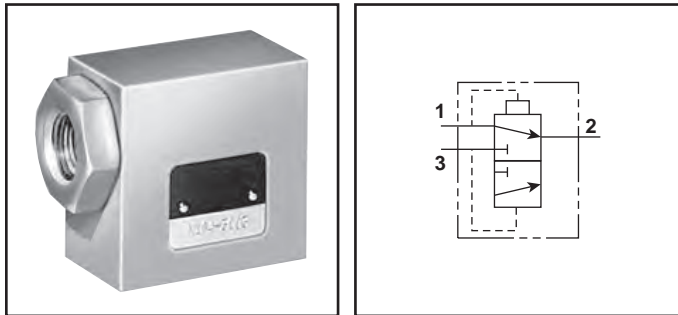
Model Selection, Performance Data and Dimensions

Port			Flow (SCFM) [†]	Model Number		A	B	C	Service Kit No.
1	2	3		NPTF	BSPP “G”				
STANDARD URETHANE DIAPHRAGMS (Nitrile static seals)									
1/4"	1/4"	3/8"	150	0R25NB	0RB25NB	1" Hex	2.06	2.44	033400105
	3/8"	3/8"	240	0R25PB	—	1" Hex	2.06	2.44	033400105
3/8"	3/8"	3/8"	240	0R37B	0RB37B	1" Hex	2.06	2.44	033400105
1/2"	1/2"	1/2"	450	0R50B	0RB50B	1-1/2" Hex	2.88	3.38	034750109
3/4"	3/4"	3/4"	550	0R75B	0RB75B	1-1/2" Hex	2.88	3.38	034750109
NITRILE DIAPHRAGMS (Nitrile static seals)									
1/8"	1/8"	1/8"	70	0R12B	0RB12B	7/8" Sq.	1.75	1.88	036408000
	1/8"	1/4"	70	0R12NB	0RB12NB	7/8" Sq.	1.75	1.88	036408000
1/4"	1/4"	1/4"	90	0R25B	0RB25B	7/8" Sq.	1.75	1.88	036408000
	1/4"	3/8"	90	0R25NFB	0RB25NFB	1" Hex	2.06	2.44	033408000
3/8"	3/8"	3/8"	240	0R37FB	0RB37FB	1" Hex	2.06	2.44	033408000
3/4"	3/4"	3/4"	550	0R75FB	0RB75FB	1-1/2" Hex	2.88	3.38	034759000
FLUOROCARBON DIAPHRAGMS for extended temperature operation (Fluorocarbon static seals)									
1/8"	1/8"	1/8"	70	0R12VB	0RB12VB	7/8" Sq.	1.75	1.88	036508000
	1/8"	1/4"	70	0R12NVB	0RB12NVB	7/8" Sq.	1.75	1.88	036508000
1/4"	1/4"	1/4"	90	0R25VB	0RB25VB	7/8" Sq.	1.75	1.88	036508000
3/8"	3/8"	3/8"	240	0R37VB	0RB37VB	1" Hex	2.06	2.44	033400319
1/2"	1/2"	1/2"	450	0R50VB	0RB50VB	1-1/2" Hex	2.88	3.38	034750120
3/4"	3/4"	3/4"	550	0R75VB	0RB75VB	1-1/2" Hex	2.88	3.38	034750120
PTFE DIAPHRAGMS for higher pressure and temperature (Fibre static seals)									
3/8"	3/8"	3/8"	240	0R37TB	0RB37TB	1" Hex	2.06	2.44	033400504

† At 100 PSIG inlet pressure with full pressure drop.

BOLD ITEMS ARE MOST POPULAR.

Shuttle Valve



General Information

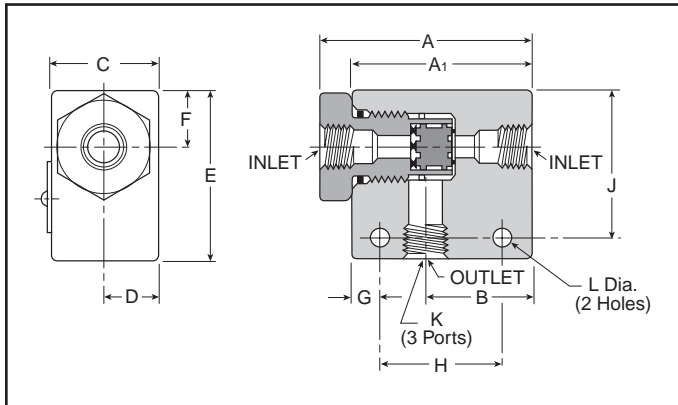
Shuttle valves determine a single pneumatic output from two separate inputs. If pressure is applied to both ports simultaneously, the valve will select the port with the higher pressure.

Valve Specifications

Maximum Operating Pressure 200 PSIG Maximum
 3 PSIG Minimum: Differential Pressure

Operating Temperature 0° to 160°F*

* Ambient temperatures below freezing require moisture-free air. Ambient temperatures below freezing and above 180° require lubricants especially selected for suitability at these temperatures. Pneumatic valves should be used with filtered and lubricated air.



Component Materials

Body Material Aluminum
Internal Components Aluminum
Seals Nitrile

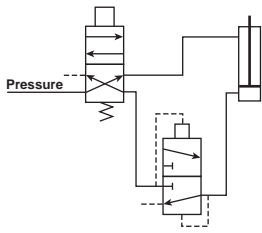
Model Selection and Dimensions

Model Number	Port Size	Dimensions											
		A	A1	B	C	D	E	F	G	H	J	K	L
N164 1001	1/8"	N/A	1.62	0.81	0.62	0.31	1.00	0.281	0.312	1.00	0.75	1/8 - 27	0.219
N164 2003	1/4"	2.50	2.12	1.25	1.25	0.62	2.00	0.67	0.265	1.25	1.35	1/4 - 18	0.219
N164 3003	3/8"	2.50	2.12	1.25	1.25	0.62	2.00	0.67	0.265	1.25	1.35	3/8 - 16	0.219

Performance Data – Flow

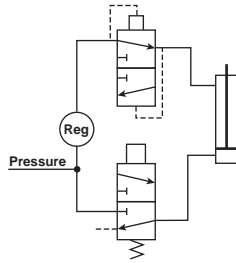
Model Number	Port Size	Flow (Cv)
N164 1001	1/8"	0.32
N164 2003	1/4"	1.65
N164 3003	3/8"	2.02

Typical “Quick Exhaust Valve” Applications



Rapid Retraction – Double Acting Cylinder

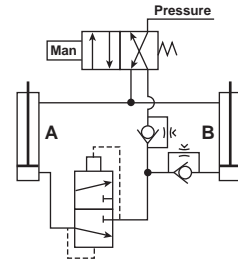
In this circuit, air is exhausted through a Quick Exhaust Valve that is **close coupled** to the cap end of the cylinder. Because the Quick Exhaust Valve has a greater exhaust capacity than the four-way Control Valve, increased cylinder speed can be accomplished with a smaller and less expensive control valve.



Dual Pressure Actuation of Double Acting Cylinder

This circuit utilizes a Quick Exhaust Valve and a three-way Control Valve to permit rapid extension of the cylinder at a high pressure. Under life.

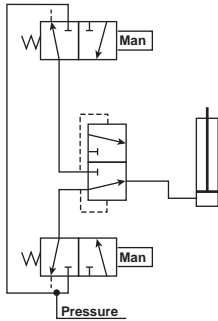
NOTE: Line pressure must be 3 or 4 times greater than rod end pressure. Effective working pressure is the differential between the cap and rod end.



Bi-Directional Control of Two Double Acting Cylinders

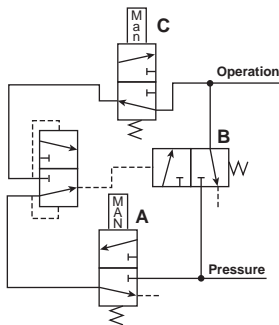
This circuit provides maximum control with a minimum of valving. A large four-way Control Valve is not needed to permit the rapid retraction of Cylinder A, as the Quick Exhaust Valve performs this function. The extension of Cylinders A and B and retraction of Cylinder B are controlled by Speed Control Valves.

Typical “Shuttle Valve” Applications



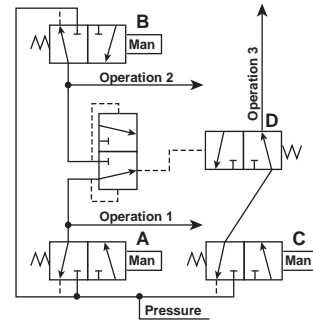
“OR” Circuit

The most common application of the Shuttle Valve is the “OR” Circuit. Here a cylinder or other work device can be actuated by either control valve. The valves can be manually or electrically actuated and located in any position.



Memory Circuit

This circuit enables continuous operation once initiated. Pressure is delivered to the circuit when Valve A is actuated. This allows pressure to pass through the shuttle valve actuating Valve B. Pressure then flows through Valve B and also the other side of the shuttle valve which holds Valve B open for continuous operation. To unlock the circuit, Valve C must be opened to exhaust the circuit and allow Valve B to return to its normally closed position.



Interlock

This circuit prevents the occurrence of a specific operation while one or another operation takes place. When either Valve A or B is actuated to perform operation 1 or 2, Valve D is shifted to the closed position and prevents operation 3 from occurring.

AirGuard Protection System

Airfuse - protection of personnel, machinery and equipment



Protect your most important assets: your employees and their equipment!

The AirGuard offers simple but efficient protection of a broken compressed-air hose. The air supply is immediately shut off by the AirGuard, should the volume of air exceed a set value. This "value" is factory preset and is set to allow normal air consumption when using air tools.

Should the air consumption exceeds the set value, e.g. the air line is severed, then the internal piston instantly shuts off the main flow. An integral bleed hole allows some air to flow through. This enables the line pressure to automatically reset the AirGuard once the main line break is repaired.

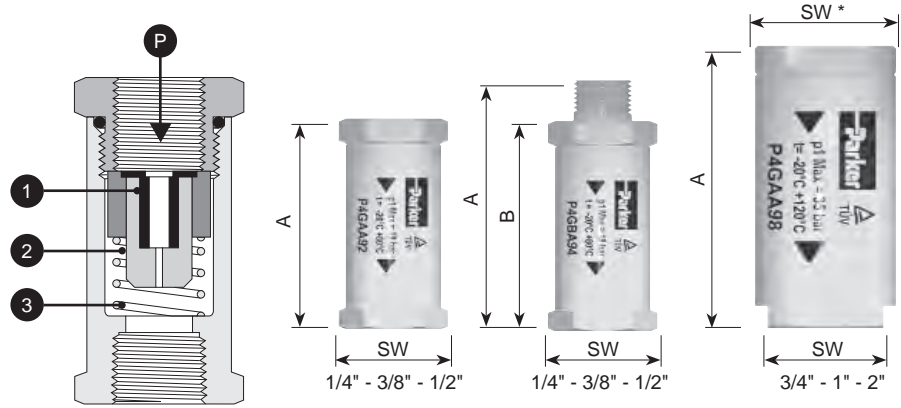
Product Features:

- Maintenance Friendly: Repair possible while plant is still operating
- Economic: Competitive pricing
- Complies with EU Standard: EN 983 - § 5.3.4.3.2.
- Reliable and Tamperproof: No adjustment necessary
- Complies with ISO Standard: 4414 - § 5.4.5.11.1
- Complies with MSHA Regulation: 30CFR 56.13021, 57.13021 and 57.1730
- Lightweight: Compact size.
- Compatible with all Pneumatic Systems
- Can be used as a Flow Blocker
- TUV Approval: No. 01-02-0145
- EU Registered Utility: Model No. 0025 73 525
- Complies with OSHA Regulation Standard: 29CFR 1926.302 (Partial)

AirGuard Protection System

Function:

(P) is the inlet. Air passes the piston (1) and continues through the seat (3). The air flow, passing the piston, is slowed down by means of length wise grooves on the outer side of the piston. If the flow is too high, the air cannot pass the piston quickly enough, and the piston is forced against the spring (2) and towards the seat. The maximum flow is shown in the graph. If the value indicated is exceeded e.g. if the hose suddenly breaks - the air supply is automatically shut of. An integral bleed hole allows some air to flow though. This enables the line pressure to automatically reset the AirGuard once the main line break is repaired.



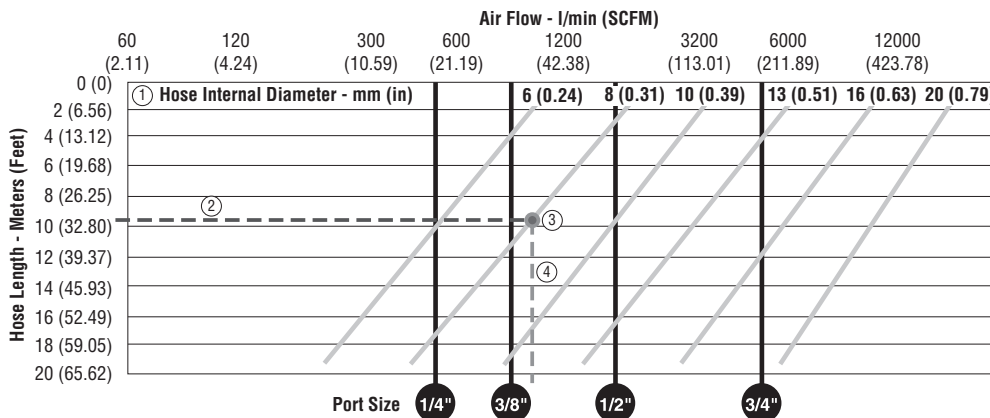
Weight and Dimensions metric (imperial)

Thread Connection	Dimensions mm (inch)			Weight g (oz.)	Max. Inlet Pressure	Temp. Range	Material	P1 Inlet Thread	P2 Outlet Thread	Part Number NPT	Part Number BSP
	A	B	SW								
1/4"	48 (1.89)	-	22 (.87)	30 (1.06)	(18 bar) 255 PSIG	-20°C to 80°C (-4°F to 176°F)	Housing: Aluminum Piston: Polyacetal	Female	Female	P4GAA92	P4GAA12*
1/4"	58 (2.28)	49 (1.93)	22 (.87)	36 (1.27)				Male	Female	P4GBA92	P4GBA12*
3/8"	59 (2.32)	-	28 (1.10)	58 (2.05)				Female	Female	P4GAA93	P4GAA13*
3/8"	71 (2.80)	59 (2.32)	28 (1.10)	62 (2.19)				Male	Female	P4GBA93	P4GBA13*
1/2"	65 (2.56)	-	31 (1.22)	78 (2.75)				Female	Female	P4GAA94	P4GAA14*
1/2"	80 (3.15)	65 (2.56)	31 (1.22)	85 (3.00)				Male	Female	P4GBA94	P4GBA14*
3/4"	76 (2.99)	-	30/36* (1.18/1.42*)	107 (3.77)	(35 bar) 500 PSIG	-20°C to 120°C (-4°F to 248°F)	Housing: Aluminum Piston: Aluminum	Female	Female	P4GAA96	P4GAA16*
1"	100 (3.94)	-	41/50* (1.61/1.97*)	300 (10.58)				Female	Female	P4GAA98	P4GAA18*
2"	130 (5.12)	-	70/80* (2.76/3.15*)	775 (27.34)				Female	Female	P4GAA9C	P4GAA1C*

* Note: BSP Threads Available Upon Request.

How to Select the Optimal Size of an AirGuard

Information based on an inlet pressure of 7 bar (100 PSIG)



- Determine the internal diameter of the hose, tube or pipe being used ① (see specification Hose-internal Diameter in yellow box, yellow diagonal line).
- Determine the length of the hose, tube or pipe ② (Hose length in meters).
- Define the intersection of point a and b, and mark a vertical line downwards. ③ - ④ (In the example the red/green dot and the green dashed line).
- The next vertical black line, left of the intersection line ④ (example: green dashed) tells the correct AirGuard size (in inches).
- Important: Every flow value to the right of the respective vertical line (black) would activate the AirGuard in case of a bursting hose, pipe or tube. All AirGuard sizes right of the intersection line (green) are too big and will not close up.
- Example: Which air fuse should be used for a hose, pipe or tube bearing 8 mm inner diameter and 10 meters of length - follow the 10 meter line (red ②) to the intersection point (red/green dot ③). Now the next left black line marks the correct size.
- Result: The correct size in our example is the AirGuard 3/8"

Automatic Electrical Drain Valve WDV3



Specifications

Operating Pressure..... 230 PSIG (15,9 bar)

Ambient Operating Range Temperature 34° to 130°F (1.1° to 54°C)

Coil Insulation
Class H 340°F (171.1°C)

Voltages
AC 115, 230/50-60

Timer:
Open Time 5 to 10 sec., Adjustable
Cycle Time 5 sec. to 45 min., Adjustable

Maximum Current Rating 4mA Max.

Port Size 1/4, 3/8, 1/2 NPT

Weight 1.8 lb. (0.8 kg)

The WDV3 Electrical Drain is designed to remove condensate from compressors, compressed air dryers and receivers up to any size, type or manufacturer.

The WDV3 offers true installation simplicity and it is recognized as the most reliable and best performing condensate drain worldwide. The large orifice in the direct acting valve, combined with its sophisticated timer module ensure many years of trouble-free draining of condensate.

Materials of Construction

Valve Body Brass / Stainless Steel

Enclosure (NEMA 4) ABS Plastic

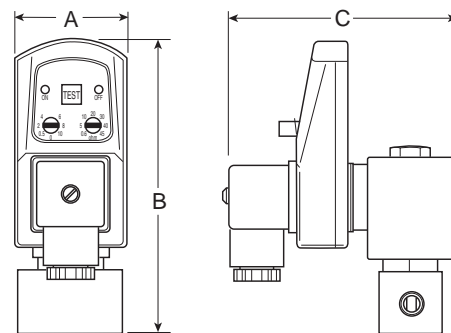
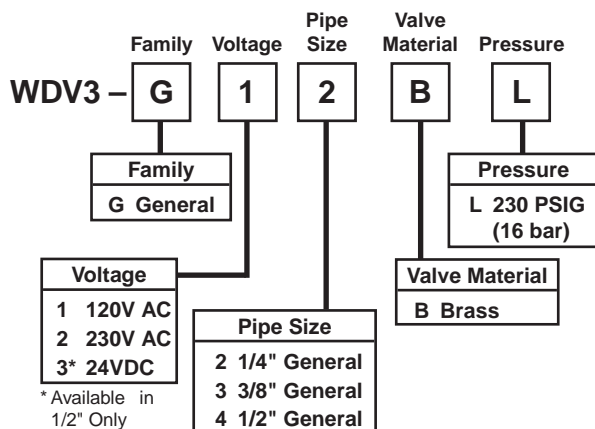
Internal Parts Brass / Stainless Steel

Sealing Material FPM (Fluorocarbon)

Benefits

- Does Not Air-Lock During Operation
- Compressed Air Systems Up to Any Size
- Also Available In Stainless Steel
- The Direct Acting Valve Is Serviceable
- Suitable for All Types of Compressors
- TEST (Micro-Switch) Feature
- High Time Cycle Accuracy
- Large (4.5mm) Valve Orifice

Ordering Information



Model Selection and Dimensions

Model Number	A	B	C
WDV3-G**BL	1.73 (44)	4.53 (115)	3.46 (88)

Zero Air Loss Condensate Drain – ED



Zero air loss condensate drains are designed for economical removal of unwanted water, oil emulsions, and other liquids. These drains will only open when liquid is present and will not allow any compressed air to escape from the system.

Specifications

Operating Pressure..... 232 PSIG (16 bar)
Ambient Operating Range Temperature35° to 140°F (1.6° to 60°C)
Voltages
 NPT115/50-60Hz Standard
 BSPP 230/50-60Hz & 24VDC Optional

Zero Air Loss Condensate Drains

Port Size (NPT)	Compressor Aftercooler (SCFM)*	Capacity Refrigeration Dryer (SCFM)**	Filter (SCFM)	Drain Capacity Per Day (Gal/Liter)	Model Number	Service Kit †
3/8	—	—	424	6 (22.7)	ED3002N115-K	SKED3000N115
1 x 1/2, 1/8	141	282	1,413	13 (49.2)	ED3004N115-K	SKED3000N115
2 x 1/2, 1/8	247	494	2,472	23 (87.1)	ED3007N115-K	SKED3000N115
2 x 1/2, 1/8	1,059	2,119	10,594	100 (378.5)	ED3030N115-K	SKED3000N115
2 x 1/2, 1/8	3,532	7,063	35,315	330 (1,249.2)	ED3100N115-K	SKED3000N115

* Based on 100 PSI working pressure, air compressor inlet at 77°F (25°C) at 60% RH, air discharge temperature of 95°F (35°C) following the aftercooler, pressure dewpoint of 37°F (2.8°C) after the refrigerated dryer.

** Condensate from aftercooler or refrigerated dryer to be drained upstream – only for residual oil content or small quantities of condensate.

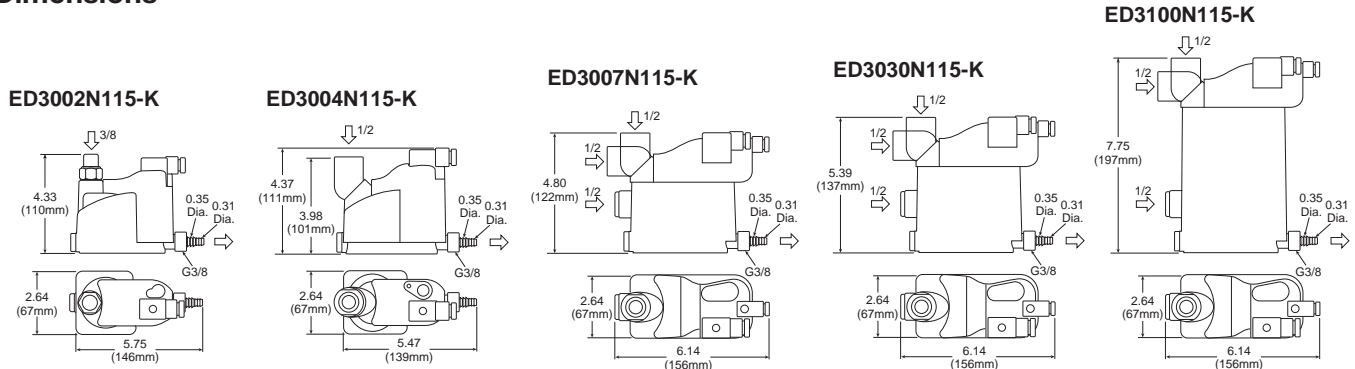
† —

Note: A 6 ft. line cord will be included with each drain.

Where are condensate drains used?

Compressor with Aftercooler	Receiver Tank	Filter	Air Dryer	Drip Leg
Removes the condensate that is collected after the air cools in the aftercooler	Removes the condensate that is collected when the air cools inside of the receiver tank	Removes the condensate that is collected in the filter bowl	Removes the condensate that is collected in the air dryer	Point-of-use applications: removes the condensate from compressed air pipes in a plant

Dimensions



O.S.H.A. Certification — All safety blow guns conform to the requirements of Compressed Air Standards as currently described in the U.S. Bureau of Labor Standards, paragraph 1910.242, when pressurized at the inlet to a maximum of 100 PSIG. Conform to current O.S.H.A. Directive No. 100-1.

Brass Nozzle Blow Guns

Contoured lever or button control both provide a natural, comfortable grip even when used with gloves. Finger guard and hang-up hook for finger protection and quick safe storage. Die cast zinc body, painted finish.

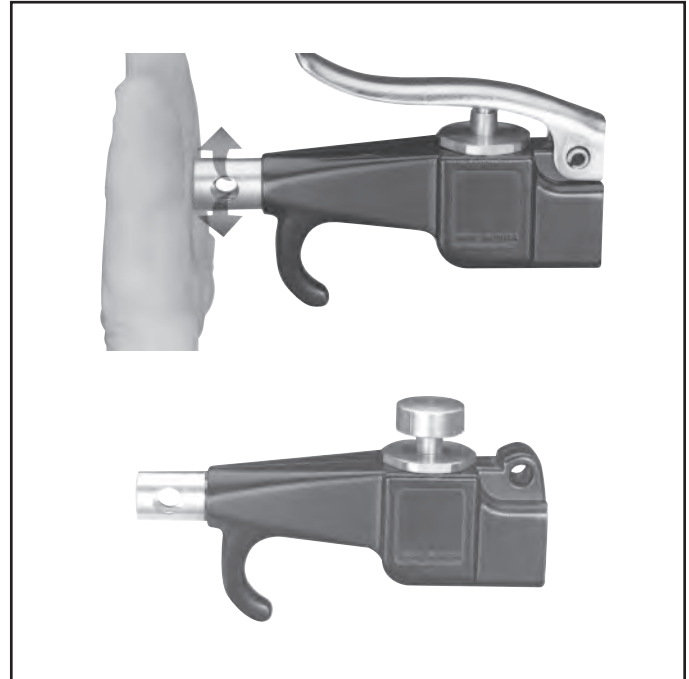
Lever Operated

Part Number	Inlet Port	SCFM Rating*
00475 0010	1/4"	20

Button Operated

Part Number	Inlet Port	SCFM Rating*
00470 0010	1/4"	20

*Based on 100 PSIG inlet pressure.



Vortec FLO-GAIN Blow Guns

A quiet Vortec FLO-GAIN nozzle is combined with a high performance blow gun. Compressed air attains sonic velocity through an adjustable slot and attaches to the exterior surface of the cone shaped nozzle. Settings are shown on a micrometer dial. Sound level of 80 dBA with 80 PSIG inlet. Finger guard and hang-up hook offers desirable finger protection and quick secure storage. Die cast zinc body, painted finish.

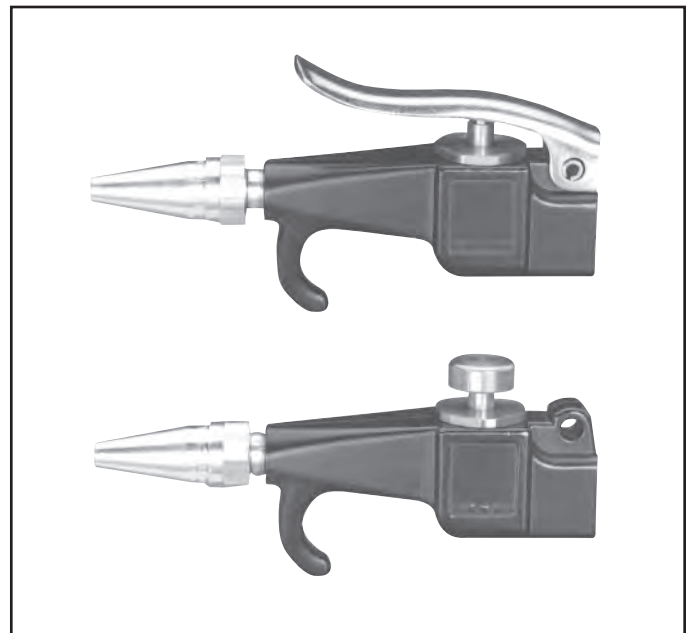
Lever Operated

Part Number	Inlet Port	SCFM Rating*
00475 0900	1/4"	70+

Button Operated

Part Number	Inlet Port	SCFM Rating*
00470 0900	1/4"	70+

*Based on 100 PSIG inlet pressure.



Self-Regulating Blow Gun

Designed with integral self-regulating pressure reducing valve for automatic shut-off when nozzle is blocked. Prevents air pressure buildup over 30 PSIG in compliance with U.S. Dept. of Labor standards.

Air shield aids in protecting the operator against blow back of flying chips of dirt. Designed to operate at less than 90 dBA to comply with government regulations. Die cast zinc body, painted finish.

May be used with nozzle extensions on page G69.



Lever Operated

Part Number	Inlet Port	SCFM Rating*
00475 2900	1/4"	10

Performance Data

Inlet Pressure	Blocked Pressure	Sound Level
70 PSIG	17.0 PSIG	79 dBA
100 PSIG	21.0 PSIG	83 dBA
175 PSIG	28.0 PSIG	87 dBA

*Based on 100 PSIG inlet pressure.

Pistol Grip Blow Gun

Pistol grip is easy to aim for quick and efficient cleaning. Ideal for all shop housekeeping purposes. Lightweight and easy to handle. Easy trigger action features instant spring adjustment for controlled air. Get the amount of air where you want it with no restrictions, no cut-offs! Makes for a convenient connection for overhead or under bench floor air use.



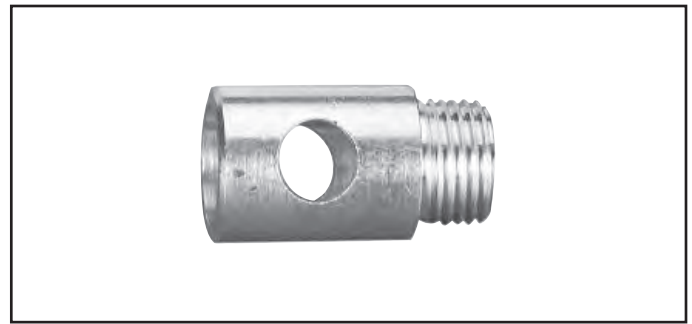
Part Number	Inlet Port	Rated Pressure	Temperature Range	OSHA Rated
BG441-NBL	1/4"	175 PSI	120° F	No

G

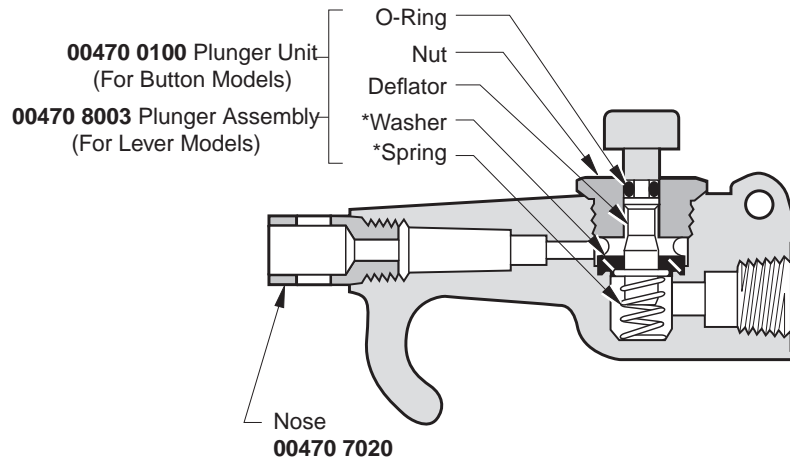
Airline Accessories

Brass Nozzle Model No. 00470 7020

General purpose nozzles are supplied as standard on 00470 0010, 00475 0010 and 07184 1000 blow guns. Conform to the requirements of the Williams Steiger Occupational Safety and Health Act of 1970, paragraph 1910.242 when fitted with blow guns pressurized at the inlet to a maximum of 100 PSIG. Conform to O.S.H.A. Directive 100-1.



470 and 475 Series Blow Guns



* Contained in Service Kit No. 00470 0090